



PRODUCT RANGE



STEEPER. DEEPER. FURTHER.

AUTO ELECTRICAL & LIGHTING

Solar Panels	4
Solar Accessories	5-7
Battery Management	8-15
Switch Panels	16
Switches	17-19
Switches & Sockets	20-21
LED Driving Lights	22-25
LED Lights	26-27



SUSPENSION & DRIVETRAIN

Suspension	28-31
Free Wheel Hub Range	32
Oil Coolers	33
Diff Breather & Drivetrain	34
Drivetrain	35

VEHICLE PROTECTION & ACCESSORIES

Vehicle Protection	36-37
Winches	38
Accessories	39
Vehicle Drawers	40
Electric Towing Mirrors	41
Floor Mats	42-43



SOLAR - PANELS

SEMI-FLEXIBLE MONOCRYSTALLINE SOLAR PANELS

Experience the excellence of high-grade monocrystalline technology, offering a lightweight and resilient solution for charging your batteries effortlessly, wherever and whenever you need.



Part No.	Watts	Dimensions	Open Circuit Voltage	Short Circuit Current
DT-SP2.5-1	2.5W	353 x 125 x 13mm	18V	113mA
DT-SPF80-1	80W	755 x 585 x 3mm	21.5V	4.87A
DT-SPF110-1	110W	1,070 x 670 x 3mm	23.75V	6.05A
DT-SPF160-1	160W	1,245 x 670 x 3mm	21.6V	9.68A
DT-SPF200-1	200W	1,520 x 670 x 3mm	22.68V	11.2A

FOLDABLE MONOCRYSTALLINE SOLAR BLANKETS

Explore limitless possibilities with our Foldable Solar Blanket range. Designed to be portable, compact, and lightweight. Embrace the convenience of reliable energy wherever you go.



Part No.	Watts	Regulator	Open Dimensions	Open Circuit Voltage	Short Circuit Current
DT-SB120-1	120W	PWM 10A	1,100 x 700 x 5mm	23.6V	6.62A
DT-SB200-1	200W	PWM 10A	1,110 x 1,105 x 5mm	24.2V	10.82A
DT-SB250-1	250W	MPPT 20A	2,500 x 680 x 10mm	24.5V	13.45A

SOLAR - ACCESSORIES

SLIM-LINE MONOCRYSTALLINE SOLAR PANELS

DT-SPS200-1

Power meets sleek design with Drivetech's newest 4x4 Slim-line solar panel. At only 6mm thick, this ultra-thin panel fits perfectly on any vehicle or compact space without compromising on strength or durability.

Maximum Efficiency in Shade: Advanced series/parallel cell construction ensures optimal power output, even under shaded conditions. Slim-line panel offers the perfect balance of size, power, and portability. Ideal for 4x4 enthusiasts, campers, RV's or anyone seeking a sleek, powerful solar solution.

- Only 6mm thick
- Series/Parallel cell construction for maximum output in the shade
- Easy to mount
- 4mm² 90cm cable with MC4
- Max power voltage: 20.6V
- Current at Pmax: 9.71A
- Open circuit voltage: 24.1V
- Short circuit current: 9.84A
- Panel size: 1,515 x 695 x 5.5mm



METAL SOLAR PANEL MOUNT KIT

DT-SPM01

- Easy to fit complete Fixed Solar Panel Mounting kit
- 4 x Aluminium mounting brackets
- 4 x 6mm stainless bolt and nut kit
- 8 x Self tapping screws with nylon seals



ABS SOLAR PANEL MOUNT KIT

DT-SPM02

- Easy to fit ABS Plastic Fixed Solar Panel mounting kit
- For installation we suggest using an ABS surface primer and then a Sikka adhesive (252), allow time to cure
- ABS mounts are designed to work with fixed glass panels
- 4 x 90° ABS mounts
- 2 x Straight ABS mounts
- 1 x Sealed Wiring cover



SOLAR - ACCESSORIES

30A MPPT SOLAR REGULATOR & MONITOR

DT-SR30M

- 12/24V systems
- Open circuit of solar panel: <75V
- Low voltage disconnection: 10.8/21.6V
- Low voltage reconnection: 12.6/25.2V
- LCD Monitor
- Fully automatic
- All battery chemistries
- Lithium Profile Option
- MPPT Regulator
- IP30
- Suitable for solar panels up to 360 watts
- 133 x 195 x 55mm



BATTERY MONITOR DISPLAY

DT-17012

- Monitor time to empty, battery percentage, current draw, current inwards and wattage usage on battery banks up to 590Ah
- Operating voltage: 8-60VDC
- Shunt operating current: 150A
- Built in current: 5-10A
- Outside unit diameter: 66 x 40 x 10mm
- Display window size: 32 x 23mm
- External dimensions of shunt: 23 x 18 x 5mm
- Compatible with Lithium batteries



30A SOLAR REGULATOR AND MONITOR

DTSR30

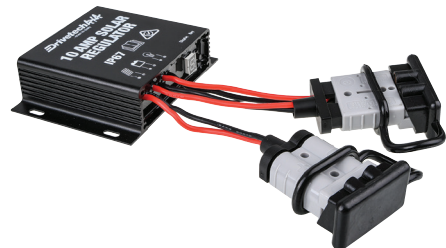
- Suitable for solar panels up to 360 watts
- Open circuit of solar panel: <50V
- Low voltage disconnection: 10.7/21.4V
- Low voltage reconnection: 12.6/25.2V
- Waterproof PWM regulator and battery monitor
- LCD monitor
- Fully automatic
- Low and high voltage disconnect



10A SOLAR REGULATOR

DTSR10

- Suitable for solar panels up to 120 watts
- Wet cell rechargeable only
- Waterproof PWM regulator
- Open circuit of solar panel: <50V
- Low voltage disconnection: 10.7/21.4V
- Low voltage reconnection: 12.6/25.2V
- Float voltage: 13.75/28V
- No load current +/- 25mA
- LED indicators
- Fully automatic



200W WIND GENERATOR KIT

DT-WG200

- 200W output
- Low start up speed of 2m/s
- Nylon fibre blades
- Die-cast aluminium housing
- Includes 3-phase regulator, 3x 1.5m mounting poles and ropes
- Comes in a handy carry bag

Wind Turbine

- Rated power: 200W
- Maximum power: 230W
- Nominal voltage: 12V/24V
- Start-up wind speed: 2.0m/s
- Rated wind speed: 10m/s
- Working speed: 2~45m/s
- Safe speed: 45m/s
- Weight: 5.9Kg
- Blade diameter: 1.1m
- Number of blades: 3
- Blade material: Nylon fibre
- Generator: Permanent magnet synchronous generator with 3-phase alternating current
- Controller system: Electromagnetic
- Speed way: Automatic adjustment of wind angle
- Working temperature: -40°C~80°C
- Tower type: Guyed tower
- 7m Wiring harness & wind controller: 1
- 1m Galvanised steel poles: 4

Wind controller

- Rated battery voltage: 12V
- Maximum wind turbine input power: 300W
- Wind turbine charge shut off voltage: 15V
- Wind turbine charge recovery voltage: 13.5V
- IP protection level: IP67



BATTERY MANAGEMENT

QUAD CONNECTOR

DT-02010

- 4x 50A Anderson Style Connectors (1x Input + 3 x Output)
- 2x 5V/2.4A USB Ports
- 2x 5V/2.4A USB-C Ports
- 1x DC8-30V Voltage Meter
- Over Voltage/Current/Short Protection
- Reverse Polarity Protection



50A ANDERSON TO MC4 PLUG

DT-APMC4

- 8B&S Cable
- MC4 Solar Plugs
- 50A Anderson style plug
- 500mm length



50A ANDERSON STYLE PLUG EXTENSION LEAD

DTAPEL

- 2 Heavy duty Anderson style plugs
- 8B&S twin core cable
- Durable polycarbonate casing
- Silver plated copper terminals
- Length: 5m



50A ANDERSON STYLE PLUG TO BATTERY CLIP LEAD

DTAPC

- 8B&S Cable
- 50A Anderson style plug to alligator clips lead
- Length: 300mm



50A ANDERSON STYLE PLUG TO EYE TERMINAL LEAD

DTAPE

- 50A Anderson style plug
- 8B&S cable
- Length: 300mm



50A ANDERSON STYLE PLUG SINGLE TO TWIN LEAD

DTAPY

- 50A Anderson style plugs
- 8B&S cable
- Conductor cross section: 8.37mm²



50A ANDERSON CONNECTOR

DT-06960 - GREY, DT-06980 - BLACK, DT-06961 - RED

- 50Amp
- 2 pins
- Silver plated copper terminals
- Suits 6 B&S cable

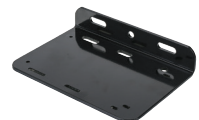


8

DC-DC CHARGER MOUNTING BRACKET

DT-02025

- Solid 5mm thick powder coated aluminium pre-drilled bracket
- Suits:
 - DT4x4 DT-02020
 - All Redarc BCDC units
 - Projecta IDC25 & IDC45
 - CTEK D250SE



BATTERY MANAGEMENT

DC-DC BATTERY CHARGER 30A WITH SOLAR INPUT

DT-02022

- Easy to read remote mount Bluetooth LCD screen
 - 12-24V system input with 12V output
 - 0-90° Operating Temperature
 - IP67 Rating
 - Modular design to easily increase amperage outputs using MST (Modular Sense technology)
 - Lithium battery charging profile
 - Internal charger temperature monitoring and power output control
 - Over charging, short circuit and temperature protection
 - Reverse polarity protection
 - 50V solar input with MPPT regulated output allowing 300W of Solar
- Unit: 190 x 125 x 40mm,
Screen: 75 x 75 x 20mm



DC-DC WIRING KITS FOR DC-DC BATTERY CHARGER

DT-02022W5 - 5M

DT-02022W10 - 10M

- 6 B&S Cable (6AWG)
- 2x Midi Fuse Holder
- 2x 40A Midi Fuse
- 2x 60A Midi Fuse
- 2x Anderson Plugs
- 4x Anderson Pins
- Negative Distribution Block



12V CONTROL BOX

DT-02009

- Laser cut alloy, powder coated black case
- Automatic resettable circuit breakers
- Includes:
 - 5x On/Off switches with sticker kit,
 - 3x Power sockets, 1x dual USB socket,
 - 2x Anderson style plugs,
 - 1x Digital voltage meter
- Compatible with wide range of DC-DC chargers and solar regulators
- Small footprint at 400 x 250 x 80mm



BATTERY MANAGEMENT

12V MINI CONTROL BOX

DT-02011

- ABS plastic
- Easy to read LCD Display
- Suitable battery types Any deep cycle (Lithium, AGM, Calcium, Wet, Gel)
- Screen only monitors USB current usage
- 4x 50A Anderson plug inputs/outputs
- 2x 10A cig socket
- 2x 2.4A USB-A
- 2x 18W QC3.0 USB
- 1x PD 20W USB-C
- 1x PD 100W USB-C
- 170 x 120 x 64mm



12/24V POWER DISTRIBUTION PANEL

DT-11220

- 1 x Dual USB Socket (2 x 5V) with Cover
- 2 x DC Power Sockets (DC12V / 20A) with Covers
- 1 x Digital Voltmeter (Rating 5-30V)
- 1 x On/Off Voltmeter Switch
- 1 x 50A Anderson Style input socket
- 1 x Pair of Mounting Brackets
- Panel made from heavy duty, 2mm thick, laser cut black powder coated aluminium
- Dimensions: 210 x 70 x 70mm
- Perfect for all your 4WD, Caravan, Camping and Trailer power needs



POWER DISTRIBUTION BOX

DT-06013

- Connect to standard Anderson plug
- 2x 10A accessory sockets
- 2x 2.4A USB outlet
- 1x 50A Anderson style plug
- 2x wired blank connectors
- LCD volt/amp meter
- Low voltage warning
- Internal circuit breaker protection



BATTERY MANAGEMENT

12V HEAVY DUTY BATTERY BOX

DT-02012

- LCD screen (monitoring: Battery voltage, current draw from USB's, outside temp and battery state of charge)
- Wireless charging
- Constructed of industrial grade polypropylene with 2.3mm thick walls
- Big enough to take a 120Ah AGM deep cycle battery
- Separate mounting tray
- Protected with Maxi Blade fuses
- Internal dimensions: 340 x 220 x 230mm
- Includes:
 - 3 x 50A Grey Anderson style connectors
 - 1x 50A Red Anderson style connector
 - 2x 12V DC sockets
 - 2x 2.4A USB sockets
 - 2x USBC sockets



12V HEAVY DUTY BATTERY BOX

DT-02008

- Constructed of industrial grade polypropylene with 2.3mm thick walls
- Big enough to take a 120Ah AGM deep cycle battery
- Internal battery strap mounts
- Separate mounting tray
- Protected with a resettable circuit breaker
- Internal dimensions: 340 x 220 x 230mm
- Includes:
 - 2x recessed 50A Anderson style connectors
 - 2x 12V DC sockets
 - 2x 2.4A USB sockets
 - 1x LED voltmeter



BATTERY MANAGEMENT

PORTABLE LITHIUM BATTERY PACK

DT-021200

- LiFePO4 1167Wh Battery Capacity (93.87Ah)
- 2400W Inverter with 3600W surge output
- Colour touch Screen
- Wireless App monitoring and control functionality
- Smart BMS with 3000W Turbo Boost charge on 240VAC
- UL94-V0 Protection
- Over Air Updates
- Fusion Mode allows dual unit capacity
- 15A DC Input via DC-DC, Solar or cigarette lighter
- Up to 600W/40V of Solar (300W@ 24V)
- 3 x 240VAC output points
- 240VAC input charger
- 2 x 18W USB outputs
- 2 x USB 18W outputs
- 2 x USB 100W outputs
- 1 x 10A Power socket output
- 2 x DC5525 8A outputs
- 15.2Kg
- 425 x 214 x 240mm



2 x 18W USB-A Ports

Charge phones, cameras, and other small USB devices easily.

2 x 18W USB-C Ports

Fast charging for compatible smartphones and accessories.

2 x 100W USB-C Ports

Power laptops, tablets, and high-demand devices with fast charging.

2 x DC5525 8A outputs

Supports additional DC devices or accessories for versatile off-grid use.

1 x 10A Power socket output

Ideal for powering equipment with standard 12V plugs, like some camping gear.



BATTERY MANAGEMENT



BATTERY MANAGEMENT

288WH PORTABLE LITHIUM BATTERY PACK

DT-02300

- LiFeP04 288Wh Battery Capacity (24Ah @12V)
- 300W Inverter with 600W surge output
- Over Air Updates
- Colour touch Screen
- Wireless App monitoring and control functionality
- UL94-V0 Protection
- 240VAC input charger
- 15A DC Input via DC, Solar or cigarette lighter
- 120W max Solar Charging Input
- 2 x 18W USB outputs
- 2 x USBC 100W outputs
- 1 x 10A Power socket output
- 2 x 240V outputs
- 3.5Kg
- 212 x 147 x 170mm

COMING
SOON



2500WH PORTABLE LITHIUM BATTERY PACK

DT-022500

- LiFeP04 2560Wh Battery Capacity (213Ah @ 12V)
- 2400W Inverter with 3600W surge output
- Colour touch Screen
- Wireless App monitoring and control functionality
- Smart BMS with 3000W Turbo Boost charge on 240VAC
- UL94-V0 Protection
- Over Air Updates
- Fusion Mode allows dual unit capacity
- 240VAC input charger
- 15A DC Input via DC, Solar or cigarette lighter
- Up to 600W/40V of Solar (300W@ 24V)
- 2 x 18W USB outputs
- 2 x USBC 18W outputs
- 2 x USBC 100W outputs
- 1 x 10A Power socket output
- 240VAC input charger
- 27Kg
- 435 x 231 x 343mm

COMING
SOON



BATTERY MANAGEMENT

SINE WAVE INVERTER

- Removable 2.4inch Bluetooth® colour LCD display with touch screen functionality for switching main unit on/off and displays inverter input voltage, amperage, output wattage and also low voltage warning
- Single 240VAC outlet
- Safety switch to turn on/off unit 240VAC output and for instantaneous output cut-off in the event of an accidental short circuit
- Shuts down output at 11V along with warning icon on LCD screen
- Over/under voltage, output short circuit, over temperature protection



Part No.	Watts	Dimensions	Output Overload	Peak Power
DT-02600	600	263 x 233 x 95mm	680W	1200W
DT-021000	1000	310 x 233 x 95mm	1100W	2000W
DT-022000	2000	435 x 233 x 95mm	2200W	4000W



SWITCH PANELS

4 SWITCH PANEL WITH FUSE PROTECTION

DT-11030

Control up to four devices with pre-wired illuminated rocker switches.

- 12/24V
- 20A @ 12V
- 1 pole
- 2 positions
- On/Off - SPST
- Blue LED illumination
- Mounting hole: 93mm x 105mm
- Fascia hides blade fuse holders
- Includes 40 application decals to customise



6 SWITCH PANEL WITH FUSE PROTECTION

DT-11031

Control up to six devices with pre-wired illuminated rocker switches.

- 12/24V
- 20A @ 12V
- 1 pole
- 2 positions
- On/Off - SPST
- Blue LED illumination
- Mounting hole: 93mm x 157mm
- Fascia hides blade fuse holders
- Includes 40 application decals to customise



ULTRA COMPACT TOUCH SWITCH PANELS WITH BLUETOOTH CONTROL

- Bluetooth App control (iOS and Android)
- Programmable momentary switching function
- Built-in resettable fuse
- Flexible wiring with 1m micro USB Cable
- Pairs up to 4 control boxes with easy switching
- Back light for easy night time operation
- 60 assorted graphics stickers
- Customisable virtual panel and backgrounds in App



Part No.	Dimensions (W x H)	Amperage	Voltage Rating	IP Rating
DT-SWP06	91 x 75mm	10A per switch, max 35A per panel	DC 11-30V	IP67
DT-SWP10	130 x 75mm	10A per switch, max 60A per panel		

SWITCHES

ROCKER SWITCHES

- On/Off - SPST
- Blue LED illumination
- 12 or 24 volt
- 36 x 20mm mounting hole
- Contacts Rated 20A @ 12V

Wiring Code

- 1. Earth
- 2. Battery +
- 3. ACC
- 4. Earth
- 5. N/A
- 6. Dash light



Part No.	Description
DT-11008	Driving Lights
DT-11009	Compressor
DT-11010	Roof Lights
DT-11011	Refrigerator
DT-11012	Beacon
DT-11013	AUX Lights

Part No.	Description
DT-11014	Backup Lights
DT-11020	Fog Lights
DT-11021	Light Bar
DT-11022	Front Diff
DT-11024	Zombie Lights

JUMP START ROCKER SWITCH

DT-11047

- Off/Mom On - SPST
- Blue LED illumination
- 12 or 24 volt
- 36x20mm mounting hole
- Contacts Rated 20A @ 12V



WINCH ROCKER SWITCH

DT-11007

- Mom On/Off/Mom On - SPDT
- Blue LED illumination
- 12 or 24 volt
- 36x20mm mounting hole
- Contacts Rated 20A @ 12V



CHROME ROCKER SWITCH

DT-11209

- On/Off - DPDT
- Rated 30A @ 12V DC and 20A @ 24V DC
- Silver plated copper contacts
- 4 blade terminals
- Switch size: 36 x 29mm
- Mounting hole: 30mm x 22mm



UHF RJ45 CABLE

DT-11118

- 60cm
- Suits DT4x4 UHF Switches



SWITCHES

OE STYLE PUSH BUTTON SWITCHES TOYOTA

- 3A @ 12V
- On/Off - SPST
- Blue LED illumination
- Wiring Code: Black: Earth, Blue: Dash light circuit (optional), Red: 12V input, Green: 12V output



Part No.	Description	Mounting Hole	Model
DT-11107	Light Bar	21 x 21mm	<ul style="list-style-type: none"> • Prado 150 series 2019 - current • HiAce 2019 - current • RAV4 2019 - current
DT-11108	Driving Lights		
DT-11109	USB Socket		
DT-11110	UHF RJ45 Socket	39 x 21mm	<ul style="list-style-type: none"> • Prado 120 series 2003-2009 • LandCruiser 100 series 1998-2007 • LandCruiser 79 series New Model • FJ Cruiser 2010-2013 • HiLux 2005-2013 KUN26R, GGN15R, GGN25R series • HiAce 2005-2013
DT-11001	Driving Lights		
DT-11106	UHF RJ45 Socket		
DT-11018	Beacon		
DT-11019	AUX Lights		
DT-11083	Lightbar		
DT-11084	Roof Lights		
DT-11104	USB Socket		

OE STYLE PUSH BUTTON SWITCHES TOYOTA & MITSUBISHI

- 3A @ 12V
- On/Off - SPST
- Blue LED illumination
- Wiring Code: Black: Earth, Blue: Dash light circuit (optional), Red: 12V input, Green: 12V output



Part No.	Description	Mounting Hole	Model
DT-11002	Driving Lights	32.5 x 22mm	<ul style="list-style-type: none"> • Prado 150 series 2010-2018 • LandCruiser 200 series 2008 - current • RAV4 2006-2011 • HiLux GUN series 09/2015 - current • Triton 2015 - current
DT-11077	Beacon		
DT-11078	AUX Lights		
DT-11081	Light Bar		
DT-11082	Roof Lights		
DT-11103	USB Socket		
DT-11105	UHF RJ45 Socket		

SWITCHES

OE STYLE PUSH BUTTON SWITCHES MITSUBISHI

- 3A @ 12V
- On/Off - SPST
- Blue LED illumination
- Wiring Code: Black: Earth, Blue: Dash light circuit (optional), Red: 12V input, Green: 12V output



Part No.	Description	Mounting Hole	Model
DT-11092	Light Bar	35 x 18mm	<ul style="list-style-type: none"> • Triton ML series 2009-2015 • Triton MN series 2009-2015 • Challenger series 2009-2015 • Pajero 2009-2015
DT-11093	Driving Lights		
DT-11094	AUX Lights		
DT-11095	Roof Lights		

OE STYLE PUSH BUTTON SWITCHES NISSAN

- 3A @ 12V
- On/Off - SPST
- Blue LED illumination
- Wiring Code: Black: Earth, Blue: Dash light circuit (optional), Red: 12V input, Green: 12V output



Part No.	Description	Mounting Hole	Model
DT-11100	Driving Lights	30 x 23mm	<ul style="list-style-type: none"> • Pathfinder R52 series 2012 - current • Navara NP300 series 2015 - current • X-Trail T32 series 2014 - current
DT-11101	AUX Lights		
DT-11102	Roof Lights		
DT-11099	Light Bar	35 x 20mm	<ul style="list-style-type: none"> • Pathfinder R51 series 2005-2012 • Navara D40 series 2008-2012 • Patrol GU4-7 series 2000-2012 • Patrol Y61 series 2013 - current • Patrol Y62 series 2013 - current • X-Trail T31 series 2007-2013
DT-11003	Driving Lights		
DT-11096	Light Bar		
DT-11097	AUX Lights		
DT-11098	Roof Lights		

OE STYLE PUSH BUTTON SWITCHES VOLKSWAGEN

- 3A @ 12V
- On/Off - SPST
- Blue LED illumination
- Wiring Code: Black: Earth, Blue: Dash light circuit (optional), Red: 12V input, Green: 12V output



Part No.	Description	Size	Model
DT-11005	Driving Lights	30 x 25mm	<ul style="list-style-type: none"> • Amarok 2011 - current
DT-11091	Light Bar		

SWITCHES & SOCKETS

OE STYLE PUSH BUTTON SWITCHES HOLDEN AND ISUZU

- 3A @ 12V
- On/Off - SPST
- Blue LED illumination
- Wiring Code:
Black: Earth,
Blue: Dash light circuit (optional),
Red: 12V input
Green: 12V output



Part No.	Description	Mounting Hole	Model
DT-11088	Light Bar	34 x 22mm	<ul style="list-style-type: none"> • Isuzu D Max 2013-2016 • Holden Colorado 2013-2016
DT-11089	AUX Lights		
DT-11090	Roof Lights		
DT-11048	Driving Lights	38.6 x 22.5mm	<ul style="list-style-type: none"> • Isuzu D Max 2009-2012 • Holden Colorado 2008-2012 • Holden Rodeo 2003-2008
DT-11004	Driving Lights		
DT-11085	Light Bar		
DT-11086	AUX Lights		

3.0 QUICK CHARGE USB AND TYPE-C PORT POWER SOCKET

DT-17104

- Input voltage: DC12V and DC24V
- QC3.0 Quick Charge USB Port
- 2x 55W Type-C Ports
- Blue LED backlight illumination
- Cover to protect against dust and grime
- ABS plastic housing
- 2x Fitting terminals
- 1x plastic fitting ring
- 2x screws



3.0 QUICK CHARGE USB, TYPE-C PORT & VOLTAGE DISPLAY POWER SOCKET

DT-17103

- Input Voltage: DC12V and DC24V
- QC3.0 Quick Charge USB Port
- 55W Type-C Port
- Blue LED Digital Voltage Display
- Cover to protect against dust and grime
- ABS Plastic housing
- 2x fitting terminals
- 1x plastic fitting ring
- 2x screws



SWITCHES & SOCKETS

DUAL USB SOCKET 2.4A PER USB

DT-17102

- 12/24V
- Dual USB Dash or panel mount
- 29mm socket mounting hole
- 2.4A per USB



20A POWER SOCKET

DT-06101

- 12/24V
- 20A
- Dash or panel mount
- Blue LED back light
- 29mm socket mounting hole



DUAL USB SOCKET PANEL MOUNT WITH VOLTMETER

DT-11025

- 12/24V
- 2.1A per socket
- 4.2A combined



12/24V ROUND VOLTMETER

DT-06104

- Blue LED display
- 5-30V range
- 29mm diameter
- Socket mount - dash or panel
- Can be used to monitor your trailer breakaway battery



LIGHTING - LED DRIVING LIGHTS

LED DRIVING LIGHT

170mm DT-DR170

- 170mm Diameter
- 1 LUX @ 690m (per pair), 8,600 Raw Lumens, 6,509 Effective Lumens
- 10 to 32V compatible
- 6.8A @ 13.2V
- 96W
- High-powered CREE XTE LEDs
- Durable black powder-coated finish
- IP68/69k
- Weatherproof Deutsch connectors
- 185 x 189 x 76.5mm
- 3 Year warranty



LED DRIVING LIGHT

220mm DT-DR220

- 220mm Diameter
- 1 LUX @ 920m (per pair), 13,500 Raw Lumens, 10,222 Effective Lumens
- 10 to 32V compatible
- 12.3A @ 13.2V
- 162W
- High-powered CREE XTE LEDs
- Durable black powder-coated finish
- IP68/69k
- Weatherproof Deutsch connectors
- 240.5 x 235 x 87.5mm
- 3 Year warranty



LIGHTING - LED DRIVING LIGHTS

LED DRIVING LIGHT BAR

8 INCH 6LED DT-LB106

- 9-36V range, compatible with 12V & 24V systems
- 1 LUX at 260m, 2,856 Raw Lumens, 1,512 Effective Lumens
- 30W (6x 5W OSRAM LEDs)
- IP68/IP69K rated: fully waterproof and dust tight
- Polycarbonate lens
- Combination beam optics
- Integrated heatsink
- 202 x 46 x 48.7mm (LxHxD)
- 2 Year warranty



LED DRIVING LIGHT BAR

12 INCH 10LED DT-LB110

- 9-36V range, compatible with 12V & 24V systems
- 1 LUX at 383m, 4,760 Raw Lumens, 2,682 Effective Lumens
- 50W (10x 5W OSRAM LEDs)
- IP68/IP69K rated: fully waterproof and dust tight,
- Polycarbonate lens
- Combination beam optics
- Integrated heatsink
- 303.6 x 46 x 48.7mm (LxHxD)
- 2 Year warranty



LED DRIVING LIGHT BAR

22 INCH 20LED DT-LB120

- 9-36V range, compatible with 12V & 24V systems
- 1 LUX at 528m 9,520 Raw Lumens, 5,015 Effective Lumens
- 100W (20x 5W OSRAM LEDs)
- IP68/IP69K rated: fully waterproof and dust tight
- Polycarbonate lens
- Combination beam optics
- Integrated heatsink
- 557.6 x 46 x 48.7mm (LxHxD)
- 2 Year warranty



LIGHTING - LED DRIVING LIGHTS

LED DRIVING DUAL LIGHT BAR

12 INCH 20LED DT-LB120D

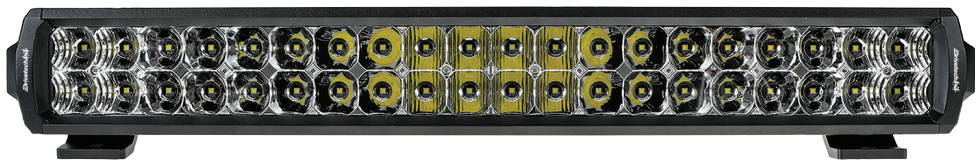
- 9-36V range, compatible with 12V & 24V systems
- 1 LUX at 400m, 9,520 Raw Lumens, 3,931 Effective Lumens, 100W (20x 5W OSRAM LEDs)
- IP68/IP69K rated: fully waterproof and dust tight
- Polycarbonate lens
- Combination beam optics
- Integrated heatsink
- 304 x 72.3 x 49.3mm (LxHxD)
- 2 Year warranty



LED DRIVING DUAL LIGHT BAR

22 INCH 40LED DT-LB140D

- 9-36V range, compatible with 12V & 24V systems
- 1 LUX at 518m, 19,040 Raw Lumens, 7,014 Effective Lumens, 200W (40x 5W OSRAM LEDs)
- IP68/IP69K rated: fully waterproof and dust tight
- Polycarbonate lens
- Combination beam optics
- Integrated heatsink
- 558 x 72.3 x 49.3mm (LxHxD)
- 2 Year warranty



LIGHTING - LED BUMPER & HEADLIGHTS

7 INCH LED HEADLIGHT WITH PARK LIGHT AND INDICATOR

DTHL7LED-2

- ADR road approved LED high/low beam headlight with incorporated parking light and sequential indicator
- Crisp white 6000K colour temperature
- Tough aluminium housing and polycarbonate lens
- IP67 waterproof and dustproof rating
- Compatible with 12V and 24V systems
- Negative switching and Canbus compatible
- 177 x 116mm to fit existing 7 inch housing
- 3 Year warranty

COMING
SOON

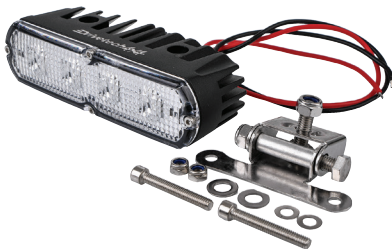


LIGHTING - LED WORK & CAMP LIGHTS

12/24V LOW PROFILE FLUSH MOUNT LED WORK LIGHT

DTWLLP

- 1,600 Raw Lumens, 1,250 Effective Lumens
- 4x 5W LEDs (20W)
- 10-30V input range, compatible with 12 and 24V systems
- Minimal current draw 1.5A @ 12V
- IP68/IP69K rated: fully waterproof and dust tight
- Deutsch DT connector
- 151 x 41 x 65mm (WxHxD)



LED ROCK LIGHT

WHITE DTWL30VL

- Single light with 3x 3W LEDs
- 1,000 Lumens output
- Surface mount
- Aluminium body with polycarbonate lens
- IP69K rated to withstand high-pressure washing
- 12 month warranty
- 75 x 43 x 15mm
- 35° rubber mounting base included



RECHARGEABLE LED TORCH WITH ADJUSTABLE BEAM

COMING SOON

DT-FL2000L

- Powerful 1000L output
- Adjustable focus
- Aluminium Housing
- Built in battery indicator
- 3.7V 2200mAh Battery with USB output
- USB-C Rechargeable
- Dimmable 2000 Lumen output
- Up to 500M beam



RECHARGEABLE COB HEADLAMP

DT-HLCOB

- Dual mode (XPE spot/ COB Flood)
- Variable Brightness: XPE Max 70 Lumens
COB Max 350 Lumens)
- On/Off switch or motion sensor
- Run Times XPE high - 4 hours /
COB high 3.5 Hours
- Charging time: approx 2.5 hours
- Includes 45cm USB-C charging cable
- 1 Year warranty



LIGHTING - LED CAMPING LIGHT

TELESCOPIC CAMPING LIGHT KIT

DT-5SMD

- Dual colour output with white and amber LEDs
- IP67 waterproof rating
- Dimmer switch to select brightness of 25%, 50% or 100%
- 5x SMD plates - white and amber LEDs
- Illumination range of up to 50m
- 3.8m telescopic, stainless steel pole, illuminates an area up to 50M in diameter.
- 10m cable, includes on/off switch and dimmer control
- Connects to 12V power supply with cigarette plug adaptor or battery clamps



SUSPENSION - ENDURO RANGE

PERFORMANCE NEVER LOOKED SO GOOD

The Drivetech 4x4 Enduro Pro remote reservoir monotube shock performs even better than it looks. The remote reservoir provides excellent heat dissipation to improve shock performance whilst allowing for extra shock travel when offroad.

ENDURO PRO SHOCK ABSORBERS & STRUTS

- Multi-stage valving - providing both comfort and performance
- Height adjustable spring seat struts - for fine tuning ride height
- Braided line to reservoir - reducing the risk of damage to the line when offroad
- 20mm chrome piston rod - for extra strength when side load exists during full travel
- 46mm diameter piston - allowing for more precise tuning
- Triple O-ring swivel connector - tightly sealing the system from water and dust
- Heavy duty rubber bushes - for a long life cycle

Available for 4WD models:

- Ford Maverick
- Ford Ranger
- Holden Colorado
- Isuzu D-MAX
- Isuzu MU-X
- Mazda BT-50
- Mitsubishi Triton
- Nissan Navara
- Nissan Patrol
- Toyota HiLux
- Toyota Fortuner
- Toyota LandCruiser
- Toyota Prado



SUSPENSION - ENDURO RANGE

ENDURO NITRO GAS SHOCK ABSORBERS & STRUTS

- Nitrogen gas charged
- Twin tube
- Self-lubricating multi-lip oil seal
- 35mm bore
- 16 - 18mm chromed piston rod
- Suits up to 50mm raised suspension



ENDURO FOAM CELL SHOCK ABSORBERS

- Foam-cell technology
- Twin tube
- Chromed piston rod
- Heavy duty construction
- Suits 50mm raised suspension



ENDURO PRO SHOCK ABSORBERS & STRUTS

- Multi-stage valving
- Height adjustable spring seat struts
- Braided line to reservoir
- 46mm diameter piston
- Triple O-ring swivel connector



ENDURO STEERING DAMPERS

- Twin tube
- 35mm bore

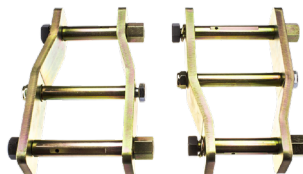


ALSO SOLD SEPARATELY

Coil Springs



Leaf Spring Shackle



SUSPENSION - ENDURO LIFT KITS

Drivetech 4x4 Enduro Suspension Lift Kits are engineered for ultimate suspension performance. They contain everything you need to successfully raise your 4WD for increased on road comfort, and offroad performance.

ENDURO NITRO GAS SUSPENSION LIFT KITS

Available in heavy duty and extra heavy duty (constant load)

- Suits up to 50mm raised suspension
- Shock absorbers and struts
 - Nitrogen gas charged
 - Twin tube
 - Self-lubricating multi-lip oil seal
 - 35mm bore
 - 16 - 18mm chromed piston rod
- Australian made coil springs
- Greasable shackles and pins
- Polyurethane bushes



ENDURO FOAM CELL SUSPENSION LIFT KITS

- Available in heavy duty and extra heavy duty (constant load)
- Suits up to 50mm raised suspension
- Shock absorbers
 - Foam-cell technology
 - Twin tube
 - Chromed piston rod
 - Heavy duty construction
- Australian made coil springs
- Greasable shackles and pins
- Polyurethane bushes



ENDURO PRO SUSPENSION LIFT KITS

- Available in heavy duty and extra heavy duty (constant load)
- Suits up to 50mm raised suspension
- Shock absorbers and struts
 - Multi-stage valving
 - Height adjustable spring seat struts
 - Braided line to reservoir
 - 20mm chrome piston rod
 - 46mm diameter piston
 - Triple O-ring swivel connector
- Australian made coil springs
- Greasable shackles and pins
- Polyurethane bushes



SUSPENSION

ADJUSTABLE UPPER CONTROL ARMS

- The Drivetech 4x4 range of upper control arms offer between $+2.5^\circ$ & $+3.50^\circ$ caster and up to -1.50° of camber adjustment
- Designed to assist and correct your 4x4's steering geometry these are a must have for any serious off roader
- Sold as pairs for your convenience



ADJUSTABLE PANHARD RODS

- The Drivetech range of adjustable panhards rods enable you to fine tune your lateral position of your rear axle
- For lifted 4x4's these should be installed to correct axle shift on your 4x4



ALSO SOLD SEPARATELY

Pins



Poly Bushes



Shackles



Strut Tops



U Bolts



FREE WHEEL HUB RANGE

When it comes to getting your 4x4 geared up and ready to tackle any type adventure, Drivetech 4x4 have a whole range of products to make your trip easier, more enjoyable and give your 4x4 or ute the performance and aesthetics it needs to go the distance and stand out among the crowd. From a single wheel stud to a full suspension lift kit the Drivetech 4x4 brand stock hundreds of quality 4x4 components at a price to suit any budget. Drivetech 4x4 really is driven by quality.

- Manual models have a large dial allowing the user to effortlessly change from 2 wheel drive to 4 wheel drive mode
- Automatic models dial allows Automatic operation or the user to effortlessly lock 4 wheel drive mode from 2 wheel drive
- Affordable Replacement
- Comprehensive range available to suit the most popular 4WD vehicles on the road

Part No.	Model
DT-FWH110	
DT-FWH120	
DT-FWH130	
DT-FWH140	To suit Toyota vehicles
DT-FWH150	
DT-FWH160	
DT-FWH170	
DT-FWH210	
DT-FWH220	To suit Nissan vehicles
DT-FWH230	
DT-FWH310	To suit Mitsubishi vehicles
DT-FWH410	To suit Isuzu vehicles
DT-FWH510	To suit Suzuki vehicles
DT-FWH710	To suit Daihatsu vehicles



(Automatic)



(Manual)

OIL COOLERS

4X4 AUTOMATIC TRANSMISSION AUXILIARY OIL COOLERS

Take the “sizzle” out of your 4x4 automatic transmission by fitting a high performance Drivetech 4x4 Automatic Transmission Cooler.

Essential when towing or navigating heavy 4x4 workloads, the cooler prevents the transmission overheating and oil breakdown - a known cause of early transmission failure.

Features:

- Rigid solid frame mounting brackets for secure mounting
- High strength material used in the construction of all mounting hardware
- Single and dual cooling cores maintain an even and consistently lower oil temperature inside your transmission
- Easy to follow illustrated mounting instructions
- Premium quality components used to ensure continued high performance, long life use
- 2 Years 80,000km warranty

Popular Vehicle Applications:

- Ford Ranger 3.2L PX1, 2, 3 with 6 speed auto
- Ford Ranger PY
- Isuzu D-MAX 3.0L with 5 & 6 speed auto
- Volkswagen Amarok 2.0L & 3.0L with 8 speed auto
- LDV T60 2.8L with 6 speed auto
- Jeep Wrangler 2.8L, 3.6L, 3.8L 4 & 5 speed auto
- Toyota 300 Series LandCruiser



DIFF BREATHER & DRIVETRAIN

UNIVERSAL 2 POINT DIFF BREATHER KIT

DT-2DBK

This easy to install universal diff breather kit comes with everything you will need to protect your front and rear diff from water ingress.

- Reduces the risk of damage to the front and rear diff on your 4x4 with a simple yet effective design
- Ensures easy fitment and maintenance
- Allows connection of a hose to a high point of the engine bay safely and securely to reduce the risk of damage to the tube from moving objects

Kit includes:

- 1x 10m hose
- 4x clamps
- 1x mounting bracket
- 2x barb fittings and filters
- 10x cable ties



WHEEL BEARINGS & KNUCKLE SPINDLES

- Sourced from leading OE suppliers
- Includes ABS Sensor where applicable
- Bearing kits include Bearing, Seal, Gasket & Locking Washers



DRIVESHAFTS, AXLES & CV JOINTS

- Joints include CV boot, Circlip, Grease & Steel Clamps where applicable.
- Complete shafts are fitted with high quality neoprene boots and stainless-steel clamps & support up to 2" lift
- 3 Year/60,000km warranty on Driveshafts and 1yr/20,000km on Axle Shaft & Joints



DRIVETRAIN

DRIVETRAIN REBUILD KITS

- Manual Gearbox Overhaul Kits DT-GB*
- Transfer Case Rebuild Kits DT-TRANS*
- Wheel bearing Kits DT-WBK*
- Axle Kits DT-AK*
- Swivel Housing Kit DT-SH*
- Axle & Swivel Housing Combo Kit DT-AXKIT*
- Hub Bearing Kits DT-HA*
- Differential Rebuild Kits DT-DBK*



DOUBLE LIP SEAL

- Drivetech 4x4 Labyrinth Seals unique design reduces heat generation and prevents mud penetration by moving the rotating surface internally for a more secure seal on components
- Included in multiple axle and wheel bearing kit, or sold separately



DIFFERENTIAL COMPONENTS

- Crown wheel and pinions available in OEM ratios
- Available in kits with flange, seals, nut
- Rebuild kits for crown wheel & pinions also available
- Also available as a kit with differential bearings
- 1yr/20,000km warranty



VEHICLE PROTECTION

UPGRADE YOUR 4X4 WITH PROTECTION AND STYLE

Experience the ultimate in off-road protection and performance with Drivetech 4x4's No-Loop, Aluminium Bull Bars.

Lighter, Stronger, Smarter

Say goodbye to heavy steel bull bars and hello to the lightweight strength of aluminium. DT4x4 4WD Aluminium Bull Bars are crafted from 4mm thick aluminium, providing advanced protection without the weight penalty.

Plus, aluminium won't rust like steel. Ensuring your bar stays strong and looking great for years to come.

Engineered for Adventure

DT4X4 bars are designed with the serious 4x4 enthusiast in mind, featuring:

- Black powder coat finish to reduce corrosion & for a sleek, rugged look
- ADR, ADAS, and Airbag compatible design
- Full side stone guards for comprehensive protection
- Styled to suit bolt-on flairs for a seamless fit
- Winch compatibility, up to 9,500 LBS (4,300kg)
- Internal bracing for added structural integrity
- Designed to fit DTW950012VD
- Fitted with 2, 4000kg rated tow points

Part No.	Model	Part No.	Model
DT-FBA001	Ford Ranger PX III	DT-FBA004	Mitsubishi Triton MR
DT-FBA002	Toyota Hilux N80 2020+	DT-FBA005	Volkswagen Amarok 2022
DT-FBA003	Isuzu D-Max 2024	DT-FBA006	Ford Ranger PY



VEHICLE PROTECTION

STEEL REAR BUMPER TOW BAR

- Fitted with 2, 5000kg rated points
- 3.5 tonne rated towing capacity
- 90kg fitted weight
- Black powder coat finish
- Includes rear accessory light
- Made from 3mm Steel

Part No.	Model
DT-RBS001	Ford Ranger PX III
DT-RBS002	Toyota Hilux N80
DT-RBS003	Isuzu D-Max RG
DT-RBS004	Mitsubishi Triton MR
DT-RBS006	Ford Ranger PY



MULTI FIT SIDE STEPS & FITTING KITS

SIDESTEP DT-SSTEPV01

- 51mm Steel Tube, with 3mm thick aluminium non-slip foot grates
- Black Powder coated to reduce corrosion
- 300kg working load limit
- Dimensions
 - 194cm long
 - 175.5cm wide
 - 20kg per step

FITTING KITS

- Chassis mounted design for extra strength
- Uniquely designed, for a perfect fit on each specific vehicle
- Designed to allow forward/backward adjustment, and inward/outward adjustment
- Designed to work exclusively with DT-SSTEPV01

Part No.	Model
DT-SSTEP001	Ford Ranger PX III
DT-SSTEP002	Toyota Hilux N80
DT-SSTEP003	Isuzu D-Max RG
DT-SSTEP004	Mitsubishi Triton MR
DT-SSTEP005	Volkswagen Amarok MY17+
DT-SSTEP006	Ford Ranger PY
DT-SSTEP009	Mitsubishi Triton MV



WINCHES

WINCHES WITH SYNTHETIC ROPE

- 3 Year electrical warranty
- Limited lifetime mechanical warranty
- All winches come with a wired handheld remote (12,000lb and 9,500lb also include a wireless remote), roller fairlead and winch hook

Part No.	Line Pull	Motor	Gear Ratio	Rope Length
DTW250012VD	2,500lb (1,134kg)	1.9kw (2.6hp motor)	170 : 1	5mm x 15m
DTW950012VD	9,500lb (4,309kg)	4.6kw (6.1hp motor)	184 : 1	9mm x 25m
DTW1200012VD	12,000lb (5,443kg)	4.6kw (6.1hp motor)	265 : 1	10mm x 25m

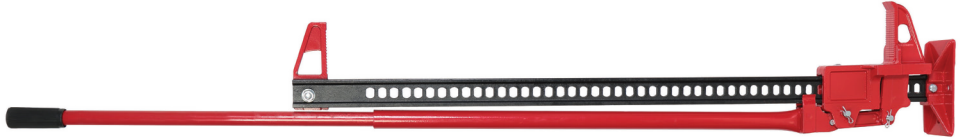


ACCESSORIES

HIGH LIFT JACK 1,500KG

DT-HLJ1500

- Steel Construction
- Working Load Limit: 1500kg
- Height Lowered: 110mm
- Height Raised: 1010mm



TYRE PRESSURE MONITORING SYSTEM - SOLAR

DT-TPMS5S

- 5 external sensor kit
- Wireless solar-powered on dash design with real time display
- Monitoring Range: 0~99Psi
- All-weather design with IP67 waterproof sensors
- 10M Sensor range from Monitor unit
- Suitable for cars, utes, buses, trailers and caravans
- Visual and audible warnings for puncture, abnormal pressure, high temperature and low battery



UTE LADDER RACK

DT-LR01

- Maximum static load: 400kg
- Maximum dynamic load: 150kg
- Can be used on utes with or without tonneau covers
- Height adjustable from 495 - 735mm



TWIN VEHICLE DRAWERS

VEHICLE DRAWER

- Includes fridge slides with self-closing latches
- Lightweight aluminium
- Dark grey marine carpet
- LED lighting inside drawers
- Rubber seal bearings



Part No.	Size
DT-DS900T	900mm
DT-DS1000T	1000mm
DT-DS1300T	1300mm



DRAWER WING KITS

- Finish off your drawer installation
- Dark grey marine carpet to match DT4X4 Drawers

Part No.	Model
DT-DW002	• Toyota Prado 120
DT-DW003	• Toyota Prado 150
DT-DW004	• Toyota LandCruiser 80
DT-DW005	• Toyota LandCruiser 100
DT-DW006	• Toyota Landcruiser 100 with A/C

Part No.	Model
DT-DW007	• Toyota LandCruiser 200
DT-DW008	• Nissan Patrol DX ST STI ST-S
DT-DW009	• Nissan Patrol ST-L
DT-DW010	• Nissan Patrol GQ
DT-DW011	• Universal Ute Pair

TOWING MIRRORS

VEHICLE SPECIFIC TOWING MIRRORS

These mirrors replace your existing side mirrors to give you greater visibility while towing.

- Extendable telescopic arms
- Fully extends to 530mm
- Plug and play precise fitment
- Large flat adjustable mirror
- Secondary convex wide angle mirror
- Integrated LED indicators on applicable models



Part No.	Model
DT-TM2001EBS	• Mitsubishi Triton 2015 - 2023 (not compatible with blind spot monitoring for 2019 > MR Triton GLS & Premium)
DT-TM2002EBS	• Toyota Hilux 2005 - Jun 2015 N70/VIGO/KUN26
DT-TM2003EBS	• Toyota Hilux July 2015- 22 N80/REVO/GGUN • Toyota Fortuner 2015 >
DT-TM2005EBS	• Nissan Pathfinder 2005 - 2014 • Navara D40/550 2005-2015
DT-TM2006EBS	• Mitsubishi Pajero 2001 >
DT-TM2007EBS	• Toyota LandCruiser 70 Series 1975 - 1979
DT-TM2009EBS	• Toyota LandCruiser Prado 150 Series 2009 - 2021
DT-TM2011EBS	• Toyota LC 200Srs LEXUS LX570 2007 - 08/2015 • Lexus LX 570 2007 – 08/2015
DT-TM2012EBS	• Mazda BT50 10/2011 - 06/2020
DT-TM2013EBS	• Ford Ranger 2012 - 06/2022, Everest 2015 >
DT-TM2017EBS	• Holden Colorado RG 2013 - 2020, • Isuzu D-MAX 2012 - 2019, MU-X 2014 - 2019
DT-TM2020EBAG	• Volkswagen Amarok 2009 - 2023
DT-TM2023EBS	• Mitsubishi Triton 2005 - 2015
DT-TM2027EBS	• Nissan Navara NP300 2015 >
DT-TM2029EBS-BSH	• Jeep Grand Cherokee WK2 2011 >
DT-TM2030EBS	• Nissan Patrol Y62 2012 >
DT-TM2031EBS	• Isuzu D-MAX 08/2020 >

FLOOR MATS

VEHICLE SPECIFIC MOULDED FRONT SETS

- Full cabin front floor coverage including extended sill protection
- Deep mats with extended sill coverage
- Made from tough and durable TPE material
- Easy to install, remove and clean
- Lifetime warranty



Part No.	Model
DT-VM001	• Toyota HiLux SR5 Automatic 2016+
DT-VM002	• Toyota Prado 150 series Automatic 2010+
DT-VM003	• Mazda BT-50 2020+
DT-VM004	• Isuzu D-Max 2021+
DT-VM005	• Nissan Navara NP300 Automatic 2014+
DT-VM006	• Ford Ranger PX1-PX3 2011-2022
DT-VM007	• Toyota LandCruiser 300 Series 2021+
DT-VM008	• Toyota LandCruiser 200 Series 2007-2021
DT-VM009	• Toyota LandCruiser 76 Wagon 2007+ / 79 Dual Cab 2012+
DT-VM010	• Mitsubishi Triton 2015+
DT-VM011	• Ford Ranger 06/2022+
DT-VM012	• Great Wall 09/2020+
DT-VM013	• Nissan Patrol Y62 12/2012+
DT-VM014	• Suzuki Jimny 07/2018+
DT-VM015	• Toyota Landcruiser 79 Series
DT-VM016	• Volkswagen Amarok 2009 - 2022
DT-VM017	• Volkswagen Amarok 09/2022+
DT-VM034	• Toyota Landcruiser 80 Series 1990-1997

FLOOR MATS

VEHICLE SPECIFIC MOULDED REAR SETS

- Deep mats with extended sill coverage
- Made from tough and durable TPE material
- Easy to install, remove and clean
- Lifetime warranty



Part No.	Model
DT-VM018	• Toyota HiLux 2015+
DT-VM019	• Toyota Prado 150 Series 2010+
DT-VM020	• Mazda BT-50 2020+
DT-VM021	• Isuzu D-Max 2021+
DT-VM022	• Nissan Navara NP300 2014+
DT-VM023	• Ford Ranger PX1-PX3 2011-2022
DT-VM024	• Toyota LandCruiser 300 Series 2021+
DT-VM025	• Toyota LandCruiser 200 Series 2007-2021
DT-VM026	• Toyota LandCruiser 76 Series 2007+
DT-VM027	• Mitsubishi Triton 2015+
DT-VM028	• Ford Ranger 06/2022+
DT-VM029	• Isuzu MU-X 2021+
DT-VM030	• Mazda BT-50 2011-2020
DT-VM031	• Nissan Patrol Y62 12/2012+
DT-VM032	• Suzuki Jimny 07/2018+
DT-VM033	• Volkswagen Amarok 09/2022+
DT-VM035	• Ford Everest Next Gen 2022+
DT-VM036	• Toyota Landcruiser 80 Series 1990-1997



Find your local store at drivetech4x4.com.au

Copyright © 2026 GPC Asia Pacific ABN 97 097 993 283