

# **Drivetech<sup>TM</sup> 4x4**

...driven by quality

## **EVEN MORE FOR YOUR 4X4**



# **YOUR EASY GUIDE EVEN MORE FOR YOUR 4x4**

## **CONTENTS**

### **RECOVERY EQUIPMENT**

WINCHES	<b>4</b>
KINETIC RECOVERY ROPE	<b>6</b>
RECOVERY KITS	<b>7</b>
STRAPS	<b>8</b>
RECOVERY ACCESSORIES	<b>9</b>
OFFROAD JACK	<b>10</b>
TRED	<b>12</b>

### **TYRE MAINTENANCE**

AIR COMPRESSORS	<b>14</b>
REPAIR & ACCESSORIES	<b>15</b>
PRESSURE MONITORING	<b>16</b>

### **AWNINGS**

AWNINGS & ACCESSORIES	<b>18</b>
-----------------------	-----------

### **DRIVETECH 4X4 BY RIVAL**

BUMPERS	<b>20</b>
ROOF RACKS & STRUTS	<b>21</b>
UNDERBODY ARMOUR	<b>22</b>

JEEP WRANGLER JK/JL	<b>25</b>
FORD RANGER PX SERIES	<b>26</b>
FORD EVEREST/BT-50	<b>27</b>
MITSUBISHI TRITON MQ	<b>28</b>
NISSAN NAVARA NP300	<b>29</b>
TOYOTA HILUX N70 / N80	<b>30</b>
TOYOTA PRADO 150	<b>32</b>
TOYOTA LC200	<b>33</b>
ISUZU D-MAX	<b>34</b>
VOLKSWAGEN AMAROK	<b>35</b>

### **SNORKELS** **36**

### **SUSPENSION**

SHOCKS & DAMPERS	<b>38</b>
ENDURO PRO	<b>39</b>
SUSPENSION LIFT KITS	<b>40</b>

### **SUMOSPRINGS** **41**

### **FILTRATION** **42**

### **FLARES** **44**

### **EXHAUST** **45**

### **MERCHANDISE** **46**



## WARRANTY

<b>Winches:</b>	7 Years Limited
<b>All Recovery Equipment:</b>	1 Year
<b>TRED:</b>	Limited Lifetime
<b>Air Compressors:</b>	3 Years
<b>Tyre Maintenance:</b>	1 Year
<b>Camping:</b>	1 Year
<b>Rival Accessories:</b>	2 Years
<b>Exhaust:</b>	2 Years

<b>V-SPEC Safari Snorkels:</b>	Lifetime
<b>ARMAX™ Safari Snorkels</b>	Lifetime
<b>R-SPEC Safari Snorkels:</b>	5 Years
<b>Suspension Lift Kits:</b>	3 Years/80,000km
<b>Shock Absorbers &amp; Dampers:</b>	3 Years/80,000km
<b>SumoSprings:</b>	3 Years/80,000km
<b>Filtration:</b>	1 Year
<b>Flares:</b>	1 Year

Some products may vary from the image shown depending on the make and model of vehicle.



# RECOVERY EQUIPMENT

## WINCHES



### WINCH ROPE

DT-DWR926S

- 9mm x 26m
- Grey with black protective sleeve
- Copper terminal on one end, metal ring on the other



### DUAL SPEED WINCH

Using advanced dual speed technology for maximum strength and fast line retrieval, the Drivetech 4x4 Dual Speed Winch is available in 9,500lb and 12,000lb models.

- 9,500lb: DT-D9500SR
- 12,000lb: DT-D12000SR

#### Features include:

- Multiple control box mounting options
- Waterproof rating IP67
- 26m synthetic rope
- Quiet operation

#### Kit includes:

- 2-in-1 wired and wireless remote control
- High quality battery isolation switch
- Remote mount control box socket
- Aluminium hawse fairlead



### WINCH DAMPER

DT-DAMPER

- An essential safety item for any cable or strap based vehicle recovery
- Reflective strip for night time visibility and handy storage pockets for gear



### OFFSET HAWSE FAIRLEAD

DT-WSP001

- Suits any brand of bull bar designed for an offset fairlead
- Smooth rope operation while protecting synthetic ropes against damage



**WARRANTY ALL WINCH EQUIPMENT**  
**7 Years Limited**

## 9500lb Dual Speed Winch (DT-D9500SR)

### Performance at Low Speed - Gear Ratio: 201.6:1

Line Pull		Line Speed		Motor
lb	kg	ft/min	m/min	Amps
0	0	38.7	11.8	85
2375	1078	13.8	4.2	195
4750	2157	10.2	3.1	257
7125	3234	7.2	2.2	323
9500	4307	4.9	1.5	419

### Performance at High Speed - Gear Ratio: 100.8:1

Line Pull		Line Speed		Motor
lb	kg	ft/min	m/min	Amps
0	0	70.8	21.6	87

- Above performance specs are based on first layer of drum -

Layer	Rated Line Pull		Rope on Drum	
	lb	kg	ft	m
1	9500	4307	6.2	5
2	7700	3490	39	12
3	6500	2946	68.2	21
4	5700	2584	95	29

## 12000lb Dual Speed Winch (DT-D12000SR)

### Performance at Low Speed - Gear Ratio: 230.4:1

Line Pull		Line Speed		Motor
lb	kg	ft/min	m/min	Amps
0	0	33.7	10.3	79
3000	1362	11.5	3.5	177
6000	2724	8	2.4	259
9000	4086	5.8	1.8	330
12000	5488	3.9	1.2	425

### Performance at High Speed - Gear Ratio: 115.2:1

Line Pull		Line Speed		Motor
lb	kg	ft/min	m/min	Amps
0	0	64.2	19.6	80

- Above performance specs are based on first layer of drum -

Layer	Rated Line Pull		Rope on Drum	
	lb	kg	ft	m
1	12000	5455	17.6	5.4
2	9530	4332	37	11.4
3	7920	3600	63	19.4
4	6770	3077	88	26.8

# RECOVERY EQUIPMENT

## KINETIC RECOVERY ROPE

### GET UNSTUCK FAST...

#### Features include:

- Approximately 30% stretch, resulting in a smooth recovery
- Durable double-braided nylon construction with protective sleeves for the eyes
- Easy to handle and will not kink
- Handy carry bag that allows the rope to be easily washed and dried whilst in the bag

**It is recommended that the minimum breaking strength of the rope should be between 2 and 3 times the vehicle's gross vehicle mass (GVM)**



### RECOVERY ROPE

3,000KG DT-KRR01

- **Minimum Breaking Strength 3,000kg**
- 6m long
- Suitable for recovering ATV's and quad bikes

### RECOVERY ROPE

8,000KG DT-KRR02

- **Minimum Breaking Strength 8,000kg**
- 9m long
- Suitable for recovering small to medium 4WD's and SUV's

### RECOVERY ROPE

11,000KG DT-KRR04

- **Minimum Breaking Strength 11,000kg**
- 9m long
- Suitable for recovering medium to large 4WD's and SUV's

### RECOVERY ROPE

20,000KG DT-KRR05

- **Minimum Breaking Strength 20,000kg**
- 9m long
- Suitable for recovering light to medium rigid trucks

**WARRANTY ALL RECOVERY  
EQUIPMENT - 1 Year**

# RECOVERY EQUIPMENT KITS



## MAMMOTH RECOVERY KIT (LARGE) DT-RKLGE

**Drivetech 4x4's Mammoth Recovery Kit is a comprehensive package containing everything required for a vehicle based or winch based recovery, including:**

- 8,000kg Snatch Strap (9m)
- 5,000kg Winch Extension Strap (20m)
- 12,000kg Tree Trunk Protector (3m)
- Recovery Hitch
- 2 x 4.75T Bow Shackles
- 8,000kg Snatch Block
- LED Head Lamp
- Folding Camp Shovel
- Folding Brush Saw
- Full leather Rigger's Gloves
- Heavy-duty Recovery Bag with internal and external pockets

**12**  
PIECE KIT



## JUMBO RECOVERY KIT (SMALL) DT-RKSML

**Drivetech 4x4's Jumbo Recovery Kit is a comprehensive package containing everything required for a vehicle based recovery, including:**

- 8,000kg Snatch Strap (9m)
- 2 x 4.75T Bow Shackles
- Recovery Hitch
- LED Head Lamp
- Folding Camp Shovel
- Folding Brush Saw
- Full leather Rigger's Gloves
- Heavy-duty Recovery Bag with internal and external pockets

**9**  
PIECE KIT

## RECOVERY BAG

**SMALL** DT-RBSML

**LARGE** DT-RBLGE

**Recovery bags are also available for individual purchase:**

- Solid, heavy-duty bag to keep your recovery equipment organised
- Solid plastic base
- Internal and external pockets for handy storage



# RECOVERY EQUIPMENT

## STRAPS & ACCESSORIES

### TREE TRUNK PROTECTOR

12,000kg 3m DT-TTP01

- **Minimum Breaking Strength 12,000kg**
- Used to prevent the ring-barking of trees when using a winch
- 100% polyester
- 75mm x 3m
- Reinforced eyes



### WINCH EXTENSION STRAP

5,000kg 20m DT-WES01

- **Minimum Breaking Strength 5,000kg**
- Used to extend the reach of your winch cable to reach a strong, suitable anchor point
- 100% polyester
- 50mm x 20m
- Reinforced eyes



### SNATCH STRAP

8,000kg 9m DT-SS001

- **Minimum Breaking Strength 8,000kg**
- 100% nylon
- 60mm x 9m
- Reinforced eyes

It is recommended that the minimum breaking strength of the rope should be between 2 and 3 times the vehicle's gross vehicle mass (GVM)



### SNATCH STRAP

11,000kg 9m DT-SS002

- **Minimum Breaking Strength 11,000kg**
- 100% nylon
- 75mm x 9m
- Reinforced eyes

It is recommended that the minimum breaking strength of the rope should be between 2 and 3 times the vehicle's gross vehicle mass (GVM)



### EQUALISER STRAP KIT

8,000kg 2.5m DT-ESK

- **Minimum Breaking Strength 8,000kg**
- Equalises the force over multiple recovery points
- 100% polyester
- Kit includes:
  - 2.5m Equaliser Strap
  - 2 x 4.75T Bow Shackles





## FOLDING BRUSH SAW

DT-FLDSAW

- Folds up for safe storage
- 65Mn steel blade
- Open length 40cm



## RIGGER'S GLOVES

DT-RIGLV

- 100% genuine leather
- Helps keep hands clean and safe from injury



## BOW SHACKLE

4.75T DT-BS47

- Rated to 4.75T
- Tested to AS/NZS 2741.2002



## RECOVERY POINTS

- Available to suit most popular models
- Rated points
- Supplied with fitting instructions
- Sold in pairs where applicable
- Painted yellow for visibility



## RECOVERY HITCH

DT-RECHTC

- Alloy construction
- Suits 50mm Towbar Hitches
- Made from lightweight aluminium rated to 4.75T
- Cross drilled, so you can use it either vertically or horizontally
- Includes 1 x 4.75T Bow Shackle



## SNATCH BLOCK

8,000kg DT-SB8T

- Rated to 8,000kg
- Greasable for smoother operation and longer life
- Will handle up to 13mm cable/rope



## FOLDING CAMP SHOVEL

DT-FLDSHV

- Vital part of any serious 4WD recovery kit
- 2 lockable positions:
  - Standard
  - 90 degrees
- Canvas pouch included



## RECHARGEABLE LED HEAD LAMP

DT-LEDRL

- Dual LED lights
- Optional sensor function
- Rechargeable 1,500 mAh Li-Ion polymer battery
- Adjustable head straps
- 3 stage light:
  - 100%
  - 50%
  - Strobe



**WARRANTY ALL RECOVERY EQUIPMENT - 1 Year**

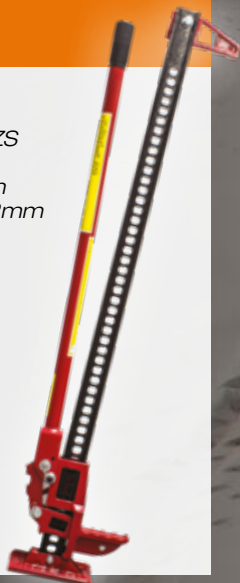
# RECOVERY EQUIPMENT

## OFFROAD JACK & ACCESSORIES

### OFFROAD JACK 48"

DT-HLJ48

- Rated to 1,750kg
- Meets the mandatory requirements of AS/NZS 2693-2007
- Minimum height 98mm
- Maximum height 1,032mm



### OFFROAD JACK BAG

DT-HLJB

- To keep your Drivetech 4x4 Offroad Jack mechanism free from contaminants and ready for use



### OFFROAD JACK STAND BASE

DT-HLJSB

- Provides a solid base on uneven terrain for stability



### OFFROAD JACK HANDLE HOLDER

DT-HLJHH

- Holds handle in an upright position during travel and storage



### OFFROAD JACK SPARE WHEEL MOUNT

DT-HLJSWM

- Provides a solid mounting point for the jack on the rear wheel carrier found on most 4WD models
- Does not require removal of the spare wheel for installation



### OFFROAD JACK BUMPER LIFT KIT

DT-HLJBLK

- Hooks to vehicle bumper to lift with the Offroad Jack



### OFFROAD JACK MATE

DT-HLJSHM

Transform your Offroad Jack into:

- Clamp/spreader
- Chain slot
- Wire strainer
- Bottle opener
- Shackle hole



WARRANTY ALL RECOVERY  
EQUIPMENT - 1 Year



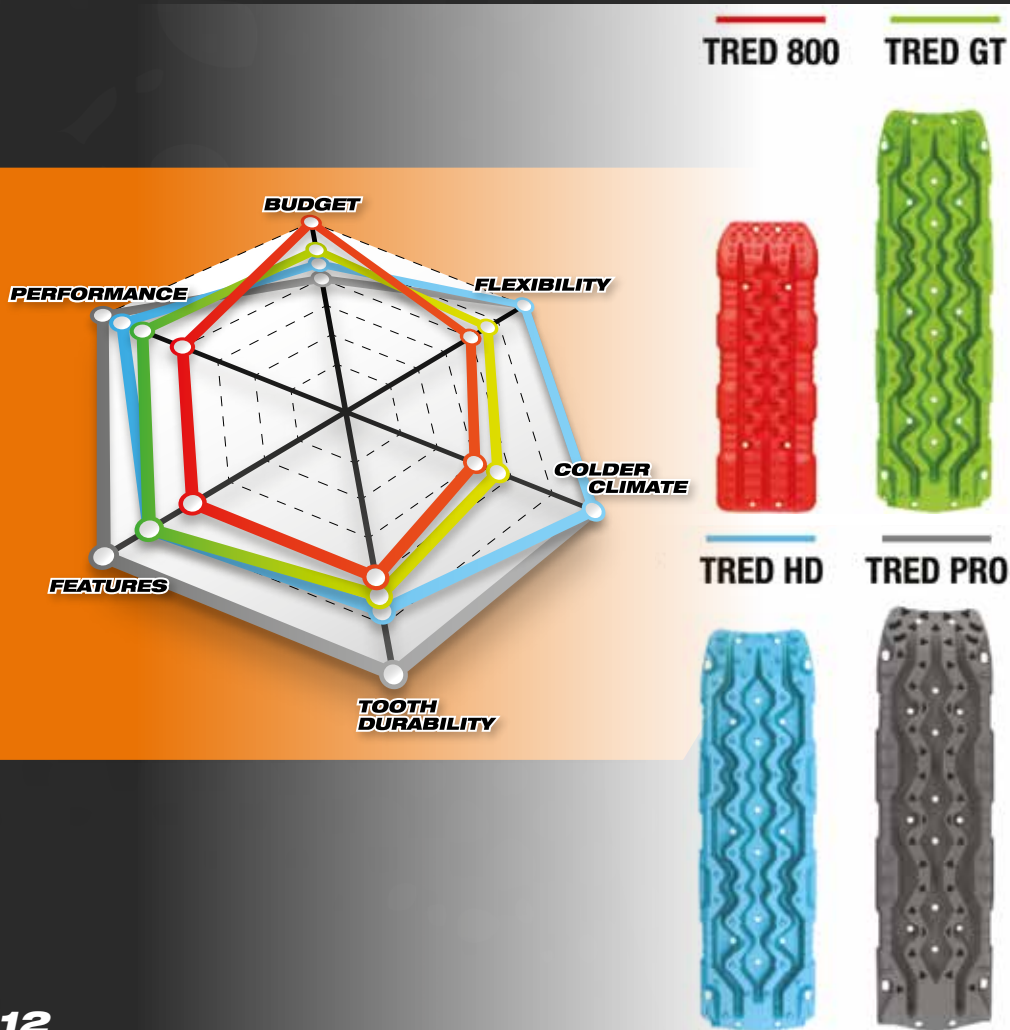
# RECOVERY EQUIPMENT

## TRED

### EXPLORE WITH CONFIDENCE.

*TRED is the ultimate all-in-one off road recovery device, specially designed to get your four-wheel drive, ATV and equipment out of trouble when traction is lost in sand, mud, sludge, slime or snow.*

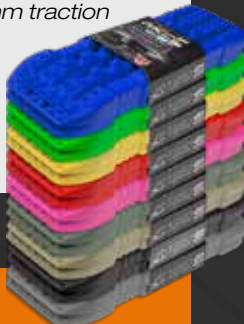
Engineered and manufactured in Australia from only the highest quality materials, TRED's are designed to handle intense levels of torque, flex, weight and impact. Intense reviews of every fine detail in the design process make TRED 4x4 the best choice for your recovery. With a designated shovel feature, extreme hex grip nodules, aggressive ramp entry teeth and ultimate wear resistant properties, TRED 4x4 will allow you to explore with confidence, without letting traction disrupt your journey.





## TRED 800

- TRED patented design
- High strength polymer materials blend to handle high levels of flex
- All weather - ambient 0° to 55°C
- Greater strength - vehicles up to 4T
- Ultra lightweight - 2.7kg each
- Greater contact - 197mm traction width
- All terrain - sand, mud, light snow
- Australian made
- Lifetime warranty
- Available in 9 colours



## TRED GT

- High quality automotive grade polypropylene
- All weather - ambient 0° to 55°C
- Greater strength - vehicles up to 4T
- Ultra lightweight - 2.7kg each
- Greater contact - 220mm traction width
- All terrain - sand, mud or light snow
- Improved flex for maximum performance
- Australian made
- Lifetime warranty
- Available in 5 colour



## TRED HD

- High quality custom engineered nylon blend
- All season - ambient -15° to 70°C
- Superior strength - vehicles up to 4.5T
- Lightweight - 3.5kg each
- Greater contact - 220mm traction width
- All terrain - sand, mud or snow
- Ultimate flex for maximum performance
- Australian made
- Lifetime warranty
- Available in 4 colours



## TRED PRO

- EXOTRED™ - patented dual composite construction for ultimate durability
- SIPE-LOCK™ - patented grip profile for ultimate traction
- All weather - ambient -15° to 70°C
- Superior strength - vehicles up to 4.5T
- Lightweight - 4.1kg each
- Greater contact - 280mm traction width
- All terrain - sand, mud or light snow
- Improved flex for maximum performance
- Australian made
- Lifetime warranty
- Available in 6 colours



	TRED 800	TRED GT	TRED HD	TRED PRO
<b>LENGTH</b> (single unit)	790 mm	1085 mm	1090 mm	1160 mm
<b>WIDTH</b> (single unit)	268 mm	312 mm	314 mm	330 mm
<b>HEIGHT</b> (single unit)	73 mm	62 mm	62 mm	65 mm
<b>STACK HEIGHT</b> (Pair)	105 mm	84 mm	84 mm	85 mm
<b>WEIGHT</b> (Pair)	5.5kg	5.5kg	6.9kg	8.2kg

# TYRE MAINTENANCE

## AIR COMPRESSOR

### GET PUMPED UP

Correct tyre pressure is one of the most important factors in 4WDing. With an air compressor, tyre deflator and repair kit onboard, you will be ready to take the pressure down on the track and back up again before you hit the bitumen.

#### AIR COMPRESSOR KIT

DT-COMPKIT

The Drivetech 4x4 Air Compressor Kit is a comprehensive kit that comes in a heavy duty bag with pockets.

**The kit includes:**

- Air Compressor (complete with 2m power cord with battery clamps and 6.5m rubber air hose with snap fittings)
- Tyre Repair Kit
- Tyre Deflator



#### AIR COMPRESSOR

DT-COMPRESSOR

- 300L/min Air Compressor
- Working pressure - 40psi
- Maximum pressure - 150psi
- Pistol grip inflator trigger with inbuilt deflator
- In-line inflator with built in gauge
- 2m power cord with battery clamps
- 8m rubber air hose with snap fittings
- Duty cycle is 15min (at 24°C) with five minute cool down time
- 12V - 45A
- Heavy-duty bag with pockets



WARRANTY AIR COMPRESSOR  
3 Years

# TYRE MAINTENANCE ACCESSORIES

## TYRE REPAIR KIT

DT-4X4TRP

- Includes all tools required to repair a puncture
- Contains 20 plugs
- Handy plastic storage case



## REPLACEMENT TYRE REPAIR PLUG

DT-1879-20

- Pack of 20
- Keeps your Tyre Repair Kit full and ready at all times



## TYRE DEFLATOR

DT-DEFLATOR

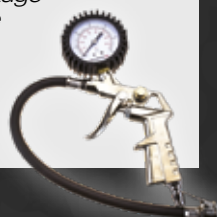
- Ideal for quick and easy deflation
- Easy to use all-in-one mechanism
- Rubber protection sleeve around gauge head
- Handy protective storage pouch



## TYRE INFLATOR

DT-INFLATOR

- Large, easy to read gauge
- Integrated purge valve
- Tyre inflation valve locking
- Flexible hose
- Impact resistant gauge protector



## COMPRESSOR HOSE EXTENSION KIT

DT-CHEK

- 6.5m Extension Hose
- Allows the air compressor hose to reach a caravan or trailer
- Supplied with the same quality snap fitting joiner as the Drivetech 4x4 Air Compressor Kit hose



**WARRANTY ALL TYRE MAINTENANCE  
EQUIPMENT - 1 Year**

# TYRE MAINTENANCE ACCESSORIES

## TYRE PRESSURE MONITORING SYSTEM DT-TPM01

- Specifications:
  - Fast/slow leakage alarm
  - High/low pressure alarm
  - Can upgrade to 10 tyres
  - Tyre pressure range:
    - 0~6Bar/0~87PSI
- Features include:
  - Wireless transmission
  - DIY installation
  - Real-time monitoring
  - High temperature alarm
  - All weather design
  - Audio alarm
  - Visual warning
  - Wireless LCD display
  - High temperature resistance battery
  - High efficiency solar panel
  - Long life battery



## HANDHELD DIGITAL TYRE PRESSURE GAUGE DT-TPG01

- Specifications:
  - Measuring range: 0~6Bar / 0~87PSI
  - Operating voltage: 2.4~3.3V
  - Operating current: < 5mA
  - Operating temperature:
    - 10°C ~70°C / +14°F~158°F
- Features:
  - Ergonomic handle
  - Automatic shut-off
  - Power-off memory function
  - Back-lit 1.6" LCD
  - High accuracy:
    - $\pm 0.1\text{Bar}$  /  $\pm 1.5\text{PSI}$
  - Measuring range:
    - 0~6Bar / 0~87PSI
  - Convertible unit display in Bar or PSI
  - Replaceable CR2032 lithium battery (1 included)
  - Works in all weather conditions
  - Tyre pressure at a glance
  - Low battery indication



## ADDITIONAL SENSORS DT-TPM02

- Additional sensors for use on trailers and spare wheels
- Replacement for lost or damaged sensors
- Sold as a pair







# AWNINGS

## AWNINGS AND ACCESSORIES



### GET COMFY OUTDOORS

Drivetech 4x4 now have a range of 4x4 vehicle awnings and add on accessories.

Whether you want to go camping or simply have a picnic at the beach, these awnings and accessories provide easy shelter and handy camping solutions.

Designed to be able to make a complete camping setup that stores away easily and provides maximum camping space.

Easy to set up and pack up, the range comes with instructions too - just in case.

### AWNINGS

Easy to install and easy to use, these awnings are made from high quality 280GSM ripstop polyester material and feature:

- Flexible nylon knuckles on the poles
- Telescopic twist lock alloy legs
- UV stable heavy duty nylon storage bag
- L-brackets to suit easy universal installation to most roof racks

Available in four sizes:

- DT-AW001 - 2 x 2.5m
- DT-AW002 - 2.5 x 2.5m
- DT-AW003 - 2.5 x 3m
- DT-AW004 - 1.4 x 2m



### AWNING TENTS

- 280GSM ripstop polyester and heavy duty PVC floor
- Fine mesh windows and doors
- Fast and easy setup

Available in two great sizes:

- DT-AWTENT1 - 2.5 x 2.5m
- DT-AWTENT2 - 2.5 x 3m





AWNING	TENT	MESH KIT	WALL	FLOOR
DT-AW001	—	DT-AWMK1	DT-AWSW1	DT-AWFLOOR
DT-AW002	DT-AWTENT1	DT-AWMK2	DT-AWSW1	DT-AWFLOOR
DT-AW003	DT-AWTENT2	DT-AWMK3	DT-AWSW1	DT-AWFLOOR
DT-AW004	—	DT-AWMK4	DT-AWSW1	DT-AWFLOOR

## AWNING MESH KITS

Made from a nylon mesh these mosquito enclosures or mesh kits are designed to use when you're in the bush and trying to keep flies and mosquitoes away so you can just relax...

Available in four sizes:

- DT-AWMK1 - 2 x 2.5m
- DT-AWMK2 - 2.5 x 2.5m
- DT-AWMK3 - 2.5 x 3m
- DT-AWMK4 - 1.4 x 2m



## MESH FLOOR

DT-AWFLOOR

A handy 3x3m mesh floor that provides a clean floor covering no matter what surface you are on.

- Made from 280GSM high density polyethylene
- 12 reinforced eyelets



## AWNING WALL

DT-AWSW1

Handy Drivetech 4x4 Awning accessory that will provide extra shade no matter what time of the day it is or where the sun is coming from.

- Made from 280GSM ripstop polyester material
- Easy to attach and easy to pack up
- Fits all 2.5m awning sides and ends



**WARRANTY CAMPING**  
**1 Year**



# DRIVETECH 4X4 BY RIVAL

## UNRIVALED PROTECTION

### FRONT BUMPER



Made from 6mm alloy to provide excellent strength and protection without the disadvantage of a heavy steel bar, Rival Bumpers are designed to ensure easy installation as a full replacement for the OE bumper.

**Features include:**

- Built-in tow hooks and jacking points
- Flush mount LED lights included
- High quality hand welds
- ADR69 compliant and airbag compatible
- Designed for ease of fitment with Rival 6mm Underbody Armour
- Winch mount and easy winch access
- Matte black finish

### REAR BUMPER



The Rival Rear Bar is the perfect lightweight solution for rear protection and tub access.

**Features include:**

- Stylish design
- Lightweight aluminium shell
- Easily accessible step
- Horizontal hitch complied ADR62



**WARRANTY RIVAL ACCESSORIES**  
**2 Years**



## ROOF RACK



The Drivetech 4x4 Roof Racks by Rival are a practical and fashionable way to carry your gear.

**Features include:**

- Made of lightweight and strong aluminium alloy
- Removable upper rail to provide flat deck
- Full length mounting rail option
- Provision for offroad mounting
- Total weight of 18kgs
- Wind deflector included
- Light mounting provision



## BONNET STRUT KIT

Made in Russia using high quality German gas struts, these precision designed kits make it easy and safe to lift your bonnet and hold it in that position. Each kit is vehicle specific and includes everything you need for a successful (no drill) installation.



## TAILGATE ASSIST KIT

Made in Russia using high quality German gas struts, these precision designed kits make light work of lowering your heavy tailgate to ensure safe operation and slow opening. Easy to install.



# DRIVETECH 4X4 BY RIVAL

## UNDERBODY ARMOUR

### UNDERBODY ARMOUR KITS

**The Rival Underbody Armour plates are sold separately so that you can choose the level of coverage that best suits your needs.**

Using a high-quality plate made from 6mm deep stamped alloy, this armour offers a lightweight and high strength solution that features:

- 6mm alloy construction
- Deep stamped bash plates with stiffening ribs
- Powder coated finish
- Rubber mounting pads for tight fitment and noise reduction
- Easy installation by using existing bolt holes
- Inspection holes for service and maintenance

#### **Benefits:**

- Three times lighter than traditional steel plates
- Twice as durable as flat skid plates credit to stiffening ribs
- 100% corrosion resistant with bars and brackets covered with AkzoNobel paint which protects them from corrosion
- Tight fitment with reduced noise or vibration while driving with rubber shock absorbers, providing a tight fitting
- No drilling required for installation by using existing vehicle bolt holes and all fasteners are provided with the kits
- No need to remove for service and maintenance
- A design featuring minimal influence to ground clearance

Plates are available for many vehicles, including those shown on the following vehicle specific pages. For latest model range listing for the Rival Bumpers and Underbody Armour, contact your nearest Drivetech 4x4 Dealer or visit our website.

### FUEL TANK ARMOUR

Separate underbody armour plates to protect the fuel tank.



### LOWER CONTROL ARM ARMOUR

Designed to help protect the lower control arms, CVs and steering components from damage while four wheel driving.



**WARRANTY RIVAL ACCESSORIES**  
**2 Years**

**SUZUKI JIMNY JB74 2018-ON**



DT-UBA55-1

**STEERING  
PLATE**



DT-UBA55-3

**GEARBOX  
PLATE**



DT-UBA55-4

**TRANSFER  
PLATE**



DT-UBA55F

**FUEL TANK  
PLATE**

**NISSAN PATROL Y62 12/12-ON**



**RADIATOR  
PLATE**



**ENGINE  
PLATE**



**TRANSMISSION  
PLATE**



**TRANSFER  
PLATE**

**NISSAN PATROL Y61, GU SERIES 4-ON**



**RADIATOR  
PLATE**



**ENGINE  
PLATE**




**TRANSMISSION  
PLATE**




**TRANSFER  
PLATE**


**TOYOTA LANDCRUISER TROOPY 8/99-7/07**



**RADIATOR/  
ENGINE PLATE**



**TRANSMISSION/  
TRANSFER PLATE**



**FUEL TANK  
PLATE**

**TOYOTA FORTUNER GUN 8/15-ON**



**RADIATOR  
PLATE**



**ENGINE  
PLATE**



**TRANSMISSION  
PLATE**

**LANDROVER DISCOVERY 1/16-ON**



**RADIATOR/ENGINE  
PLATE**



**TRANSMISSION  
PLATES**



**REAR  
PLATE**

**MERCEDES X250 1/17-ON**



**RADIATOR  
PLATE**



**ENGINE  
PLATE**



**TRANSMISSION  
PLATE**



**TRANSFER  
PLATE**





**Drivetech<sup>TM</sup> 4x4**  
...driven by quality



# DRIVETECH 4X4 BY RIVAL

## JEEP WRANGLER JK/JL SERIES

### FRONT BUMPER



### UNDERBODY ARMOUR



### REAR BUMPER



Part No.	Description
<b>JK SERIES</b>	
DT-UBA28-2	Engine Plate
DT-UBA28-3	Transfer Plate
DT-UBA28F2	Fuel Tank Plate
DT-UBA28F4	Fuel Tank Plate
<b>JL SERIES</b>	
DT-UBA37-1	Engine Plate
DT-UBA37-2	Transfer Plate
DT-UBA37F2	Fuel Tank Plate
DT-UBA37F4	Fuel Tank Plate
DT-UBA37M	Muffler Plate
DT-UBA37CA	Control Arm

# DRIVETECH 4X4 BY RIVAL FORD RANGER PX SERIES

## FRONT BUMPER



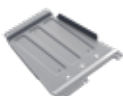
## UNDERBODY ARMOUR



**RADIATOR  
PLATE**



**ENGINE  
PLATE**



**TRANSMISSION  
PLATE**



**TRANSFER  
PLATE**



**LOWER CONTROL  
ARM ARMOUR**



**FUEL TANK  
PLATE**

## REAR BUMPER



## ROOF RACK



Part No.	Description
DT-2D18081B	Front Bumper
DT-2D18091	Headlight Infill (PXi only)
DT-2D18101B	Aerial/Light Mount
DT-2D18111	Rear Bumper
DT-2D18051	Roof Rack
DT-UBA01-1	Radiator Plate
DT-UBA01-2	Engine Plate
DT-UBA01-3	Transmission Plate
DT-UBA01-4	Transfer Plate
DT-UBA01CA	Lower Control Arm Armour
DT-UBA01F	Fuel Tank Plate
DT-TGA03	Tailgate Assist Kit
DT-BS003	Bonnet Strut Kit

# DRIVETECH 4X4 BY RIVAL

## FORD EVEREST / MAZDA BT-50

### FRONT BUMPER



### UNDERBODY ARMOUR



**RADIATOR  
PLATE**



**ENGINE  
PLATE**



**TRANSMISSION  
PLATE**



**TRANSFER  
PLATE**



**LOWER CONTROL  
ARM ARMOUR**



**FUEL TANK  
PLATE**

### ROOF RACK



Part No.	Description
<b>Ford Everest</b>	
DT-2D18081B	Front Bumper (UA)
DT-2D18101B	Aerial/Light Mount (UA)
DT-UBA01CA	Lower Control Arm Armour (UA)
<b>Mazda BT-50</b>	
DT-2D18111	Rear Bumper (UP,UR)
DT-2D18051	Roof Rack (UP,UR)
DT-UBA01-1	Radiator Plate (UP,UR)
DT-UBA01-2	Engine Plate (UP,UR)
DT-UBA01-3	Transmission Plate (UP,UR)
DT-UBA01-4	Transfer Plate (UP,UR)
DT-UBA01CA	Lower Control Arm Armour (UP,UR)
DT-UBA01F	Fuel Tank Plate (UP,UR)



# DRIVETECH 4X4 BY RIVAL

## MITSUBISHI TRITON MQ

### FRONT BUMPER



### UNDERBODY ARMOUR

**MQ**



**RADIATOR  
PLATE**



**ENGINE  
PLATE**



**TRANSMISSION  
PLATE**



**TRANSFER  
PLATE**

**FUEL TANK  
PLATE**

**ML/MN**



Part No.	Description
DT-2D40011B	Front Bumper (MQ)
DT-2D40031	Rear Bumper (MQ)
DT-2D40061	Roof Rack (MQ)
DT-UBA19-1	Radiator Plate (MQ Turbo Diesel)
DT-UBA19-2	Engine Plate (MQ Turbo Diesel)
DT-UBA19-3	Transmission Plate (MQ Turbo Diesel)
DT-UBA19-4	Transfer Plate (MQ Turbo Diesel)
DT-UBA13-1	Radiator Plate (ML/MN)
DT-UBA13-2	Engine Plate (ML/MN)
DT-UBA13-3	Transmission Plate (ML/MN)
DT-UBA13-4	Transfer Plate (ML/MN)
DT-UBA01F	Fuel Tank Plate
DT-TGA07	Tailgate Assist Kit (MQ, MR)
DT-BS001 /002	Bonnet Strut Kit (MQ) / (ML, MN)

### REAR BUMPER



### ROOF RACK





# DRIVETECH 4X4 BY RIVAL

## NISSAN NAVARA NP300

### FRONT BUMPER



### UNDERBODY ARMOUR



**RADIATOR  
PLATE**



**ENGINE  
PLATE**



**TRANSMISSION  
PLATE**



**TRANSFER  
PLATE**



**LOWER CONTROL  
ARM ARMOUR**

### REAR BUMPER



Part No.	Description
DT-2D41121B	Front Bumper (NP300/D23)
DT-2D41101B	Aerial/Light Mount (NP300/D23)
DT-2D41111	Rear Bumper (NP300/D23)
DT-UBA04-1	Radiator Plate (D40,NP300/D23)
DT-UBA04-2	Engine Plate (D40,NP300/D23)
DT-UBA04-3	Transmission Plate (D40,NP300/D23)
DT-UBA04-4	Transfer Plate (D40,NP300/D23)
DT-UBA04CA	Lower Control Arm Armour (D40,NP300/D23)
DT-TGA08	Tailgate Assist Kit (D40,NP300/D23)
DT-BS004 /008	Bonnet Strut Kit (D40) / (NP300)

# DRIVETECH 4X4 BY RIVAL

## TOYOTA HILUX KUN/N70

### FRONT BUMPER



### UNDERBODY ARMOUR



**RADIATOR/ENGINE  
PLATE**



**TRANSMISSION  
PLATE**



**TRANSFER  
PLATE**



**FUEL TANK  
PLATE**

Part No.	Description
DT-2D57071B	Front Bumper
DT-2D57151	Rear Bumper
DT-UBA07-1	Radiator/Engine Plate
DT-UBA07-2	Transmission Plate
DT-UBA07-3	Transfer Plate
DT-UBA07F	Fuel Tank Plate
DT-TGA01	Tailgate Assist Kit
DT-BS006	Bonnet Strut Kit

### REAR BUMPER



# DRIVETECH 4X4 BY RIVAL TOYOTA HILUX GUN/N80

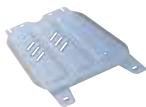
## FRONT BUMPER



## UNDERBODY ARMOUR



**RADIATOR/ENGINE  
PLATE**



**TRANSMISSION  
PLATE**



**TRANSFER  
PLATE**



**LOWER CONTROL  
ARM ARMOUR**

## REAR BUMPER



## ROOF RACK



Part No.	Description
DT-2D57011B	Front Bumper
DT-2D57161B	Front Bumper (Facelift 06/18-On)
DT-2D57121B	Aerial/Light Mount
DT-2D57151	Rear Bumper
DT-2D57051	Roof Rack
DT-UBA17-1	Radiator/Engine Plate
DT-UBA17-2	Transmission Plate
DT-UBA17-3	Transfer Plate
DT-UBA17CA	Lower Control Arm Armour
DT-TGA02	Tailgate Assist Kit
DT-BS005	Bonnet Strut Kit (also Fortuner)



# DRIVETECH 4X4 BY RIVAL

## TOYOTA PRADO 150 SERIES

### FRONT BUMPER



### UNDERBODY ARMOUR



**RADIATOR  
PLATE**



**ENGINE  
PLATE**



**TRANSMISSION  
PLATE**

Part No.	Description
DT-2D57211B	Front Bumper (GDJ150R)
DT-UBA11-1	Radiator Plate (GDJ150R / GRJ150R / KDJ150R)
DT-UBA11-2	Engine Plate (GDJ150R / GRJ150R / KDJ150R)
DT-UBA11-3	Transmission Plate (GDJ150R / GRJ150R / KDJ150R)





# DRIVETECH 4X4 BY RIVAL

## TOYOTA LC200

### FRONT BUMPER



### UNDERBODY ARMOUR



**RADIATOR  
PLATE**



**ENGINE  
PLATE**



**TRANSMISSION  
PLATE**



**TRANSFER  
PLATE**



**FUEL TANK  
PLATE**



Part No.	Description
DT-2D57191B	Front Bumper (VDJ200R)
DT-UBA09-1	Radiator/Engine Plate (VDJ200/UZJ200)
DT-UBA09-2	Transmission Plate (VDJ200/UZJ200)
DT-UBA09-3	Transfer Plate (VDJ200/UZJ200)
DT-UBA20-1	Radiator Plate (VDJ200)
DT-UBA20-2	Engine Plate (VDJ200)
DT-UBA20-3	Transmission Plate (VDJ200)
DT-UBA20-4	Transfer Plate (VDJ200)
DT-UBA23F	Fuel Tank Plate

# DRIVETECH 4X4 BY RIVAL

## ISUZU D-MAX

### REAR BUMPER



### UNDERBODY ARMOUR



**RADIATOR  
PLATE**



**ENGINE  
PLATE**



**TRANSMISSION  
PLATE**



**TRANSFER  
PLATE**

Part No.	Description
DT-2D91021	Rear Bumper (D-Max TF II)
DT-UBA14-1	Radiator Plate (D-Max TF II)
DT-UBA14-2	Engine Plate (D-Max TF II)
DT-UBA14-3	Transmission Plate (D-Max TF II)
DT-UBA14-4	Transfer Plate (D-Max TF II)
DT-UBA14-1	Radiator Plate (MU-X)
DT-UBA14-2	Engine Plate (MU-X)
DT-UBA14-3	Transmission Plate (MU-X)
DT-UBA14-4	Transfer Plate (MU-X)
DT-TGA04	Tailgate Assist Kit (D-Max TF II)
DT-BS007	Bonnet Strut Kit (D-Max TF II)



# DRIVETECH 4X4 BY RIVAL VOLKSWAGEN AMAROK

## FRONT BUMPER



## UNDERBODY ARMOUR

4 CYL



RADIATOR  
PLATE



ENGINE  
PLATE



FUEL TANK  
PLATE



LOWER CONTROL  
ARM ARMOUR

V6



## REAR BUMPER



## ROOF RACK



Part No.	Description
DT-2L18011	RANGER Winch Mount
DT-2L570112015+	HILUX Winch Mount
DT-2L58011	AMAROK Winch Mount
DT-2L91011	D-MAX Winch Mount

Part No.	Description
DT-2D58071B	Front Bumper
DT-2D58081B	Aerial/Light Mount
DT-2D58061	Rear Bumper
DT-2D58031	Roof Rack
DT-UBA12-1	Radiator Plate (4 Cyl)
DT-UBA12-2	Engine Plate (4 Cyl)
DT-UBA12F	Fuel Tank Plate (4 Cyl)
DT-UBA21-1	Radiator/Engine Plate (V6)
DT-UBA21-2	Transmission Plate (V6)
DT-UBA21CA	Lower Control Arm Armour (4 Cyl, V6)
DT-TGA06	Tailgate Assist Kit
DT-BS009 / 010	Bonnet Strut Kit (2012-16 / 16-On)



# SAFARI SNORKELS

## BREATHE EASY WITH SAFARI

**Pioneered in Australia in the early 1980's, Safari Snorkels are:**

- Thoroughly researched, tested and tooled for popular 4WD models
- Manufactured to the highest standards in durable, UV stable, cross-linked polyethylene material and deliver a continuous and cooler supply of air for maximum engine performance
- Inclusive of quality fixtures and fittings that deliver superior sealing, OEM levels of presentation and long-term durability
- Positively sealed in order to provide the engine with the ultimate in protection during river crossings and dusty desert driving conditions



### SNORKELS

**Available for 4WD models:\***

- Toyota Hilux
- Isuzu D-MAX
- Holden Colorado
- Nissan Patrol GU Ute, GU Wagon
- Toyota Landcruiser Prado 120 Series, 150 Series
- Mitsubishi Pajero
- Mitsubishi Triton
- Nissan Navara
- Toyota Landcruiser 80 Series, 100 Series (IFS petrol), 100 Series (Live Axle Front), 200 Series
- Ford Ranger
- Mazda BT50
- And many more

*\*Note: For latest model range listing, contact your nearest Drivetech 4x4 Dealer, or visit our website, as listed on the back page of this booklet.*

### R-SPEC

This range suits non-current model vehicles only.

Key features:

- Manufactured in Australia from Safari's own Recreational Specification (R-SPEC) UV Stabilised Polyethylene.
- The R-SPEC Safari Snorkel still uses the same moulds and Australian moulding processes for which it is rightly famous. They are NOT redesigned.

### V-SPEC

The traditional Safari Snorkel range, but largely restricted to current model vehicles. Essentially unchanged from the current Safari Snorkel.

Key features:

- Manufactured in Australia from Safari's own Industrial Spec UV Stabilised Polyethylene
- Identical look to the current versions of the Safari Snorkel
- Primarily suit current model vehicles.

### ARMAX™

Performance orientated Safari Snorkels that provide the necessary airflow required by those wishing to increase vehicle engine performance.

Key features:

- Safari's own Industrial Spec UV Stabilised Polyethylene
- Safari's rounded style Air Ram with minimum 4" neck and an optimised air flow, low restriction grill
- Design and flow tested for maximum performance.

**WARRANTY V-SPEC & ARMAX™ SNORKELS - Lifetime**  
**R-SPEC SNORKELS - 5 Years**





# SUSPENSION

## DRIVETECH 4X4 ENDURO RANGE

### ENDURO NITRO GAS SHOCK ABSORBERS & STRUTS

- Nitrogen gas charged
- Twin tube
- Self-lubricating multi-lip oil seal
- 35mm bore
- 16-18mm chromed piston rod
- Suits up to 50mm raised suspension



### ENDURO STEERING DAMPERS

- Twin tube
- 35mm bore



### ENDURO FOAM CELL SHOCK ABSORBERS

- Foam-cell technology
- Twin tube
- Chromed piston rod
- Heavy duty construction
- Suits 50mm raised suspension
- Available in heavy duty and extra heavy duty (constant load)



### ENDURO PRO SHOCK ABSORBERS & STRUTS

- Multi-stage valving
- Height adjustable spring seat struts
- Braided line to reservoir
- 46mm diameter piston
- Triple O-ring swivel connector
- Heavy duty rubber bushes



### ALSO SOLD SEPARATELY

Pins



Poly Bushes



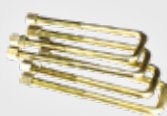
Shackles



Strut Tops



U Bolts



# **SUSPENSION**

## **DRIVETECH 4X4 ENDURO RANGE**

### **PERFORMANCE NEVER LOOKED SO GOOD**

The Drivotech 4x4 Enduro Pro remote reservoir monotube shock performs even better than it looks. The remote reservoir provides excellent heat dissipation to improve shock performance whilst allowing for extra shock travel when offroad.

### **ENDURO PRO SHOCK ABSORBERS & STRUTS**

- Multi-stage valving - providing both comfort and performance
- Height adjustable spring seat struts - for fine tuning ride height
- Braided line to reservoir - reducing the risk of damage to the line when offroad
- 20mm chrome piston rod - for extra strength when side load exists during full travel
- 46mm diameter piston - allowing for more precise tuning
- Triple O-ring swivel connector - tightly sealing the system from water and dust
- Heavy duty rubber bushes - for a long life cycle

#### **Available for 4WD models:\***

- Ford Maverick
- Ford Ranger
- Holden Colorado
- Isuzu D-MAX
- Isuzu MU-X
- Mazda BT-50
- Mitsubishi Triton
- Nissan Navara
- Nissan Patrol
- Toyota Hilux
- Toyota Fortuner
- Toyota Landcruiser
- Toyota Prado

*\*Note: For latest model range listing, contact your nearest Drivotech 4x4 Dealer, or visit our website, as listed on the back page of this booklet.*



**WARRANTY ENDURO PRO SHOCKS**  
**3 Years / 80,000km**

# **SUSPENSION**

## **ENDURO SUSPENSION LIFT KITS**

**Driveteck 4x4 Enduro Suspension Lift Kits are engineered for ultimate suspension performance.**

They contain everything you need to successfully raise your 4WD for increased on road comfort, and offroad performance.

### **ENDURO NITRO GAS SUSPENSION LIFT KITS**



- Available in heavy duty and extra heavy duty (constant load)
- Suits up to 50mm raised suspension
- Shock absorbers and struts
  - Nitrogen gas charged
  - Twin tube
  - Self-lubricating multi-lip oil seal
  - 35mm bore
  - 16-18mm chromed piston rod
- Australian made coil springs
- Greasable shackles and pins
- Polyurethane bushes
- Heavy duty torsion bars

### **ENDURO FOAM CELL SUSPENSION LIFT KITS**



- Available in heavy duty and extra heavy duty (constant load)
- Suits up to 50mm raised suspension
- Shock absorbers
  - Foam-cell technology
  - Twin tube
  - Chromed piston rod
  - Heavy duty construction
- Australian made coil springs
- Greasable shackles and pins
- Polyurethane bushes

### **ENDURO PRO SUSPENSION LIFT KITS**



- Available in heavy duty and extra heavy duty (constant load)
- Suits up to 50mm raised suspension
- Shock absorbers and struts
  - Multi-stage valving
  - Height adjustable spring seat struts
  - Braided line to reservoir
  - 20mm chrome piston rod
  - 46mm diameter piston
  - Triple O-ring swivel connector
  - Heavy duty rubber bushes
- Australian made coil springs
- Greasable shackles and pins
- Polyurethane bushes



# SUMOSPRINGS

## DRIVETECH SUMOSPRINGS

### REVOLUTIONARY 'AIRLESS AIRBAGS'...

**Introduced to the Australasian automotive aftermarket in late 2012, this revolutionary product was the world's first load assist "airless airbag" suspension system.**

Manufactured using a highly durable microcellular polyurethane material that provides progressive compression under load and variable road conditions.

Extraordinarily durable, Drivetech SumoSprings eliminate the frustrations of leaking or puncturing, which are so common in conventional airbags. There is minimal possibility of system failure with Drivetech SumoSprings, as they don't require air lines or compressors.

The microcellular polyurethane won't rupture and – incredibly – it can even be punctured without causing any loss of performance!

#### **Drivetech SumoSprings:**

- 100% maintenance free
- Leak and rupture proof
- Reduce rear end sag
- Reduce body roll
- Self-adjusting
- Easy to install – no drill installation
- Simply fit and forget



### SUMOSPRINGS - VARIABLE

**Suitable for utes, vans and 4WD's that are:**

- Fitted with leaf spring suspension
- Carrying heavy, variable loads



### SUMOSPRINGS - CONSTANT

**Suitable for utes, vans and 4WD's that are:**

- Fitted with leaf spring suspension
- Carrying heavy, constant loads



### SUMOSPRINGS LITE - COIL

**Suitable for utes, vans, 4WD's and passenger vehicles that are:**

- Fitted with coil suspension
- Carrying light to medium loads



### SUMOSPRINGS LITE - LEAF

**Suitable for utes, vans, 4WD's and passenger vehicles that are:**

- Fitted with leaf spring suspension
- Carrying light to medium loads



**WARRANTY SUMOSPRINGS**  
**3 Years / 80,000km**

# FILTRATION ENGINE PROTECTION

## VEHICLE SPECIFIC DIESEL PRE-FILTER KIT

Designed by diesel fuel injection manufacturers as a pre-filter to the original equipment filter, Drivetech 4x4 Fuel Manager protects vital diesel injection components from water, humidity, acids and other contaminants before they hit the primary fuel filter.

These kits are easily installed in your engine bay without having to modify any existing vehicle components. With multiple inlet and outlet ports, this dynamic design allows flexibility during installation.

### **Why is Drivetech 4x4 Fuel Manager the best choice?**

- Longlife filter media has been heat and chemically treated for maximum durability and acid resistance
- Easy view, see through polycarbonate drain bowl
- Suits all diesel engines from 50 to 350 horse power (37 to 261 kilowatts) with a maximum fuel operating pressure of 60psi

### **Vehicle specific Drivetech 4x4 Fuel Manager diesel pre-filter kits include:**

- Drivetech 4x4 Fuel Manager diesel pre-filter unit
- Vehicle specific high-grade stainless steel mounting bracket
- Step-by-step installation instructions
- Brass barbs and plugs
- Vehicle specific fuel line hose and connectors
- Polycarbonate bowl



## VEHICLE SPECIFIC PROVENT CATCH CAN

**Drivetech 4x4 aftermarket vehicle specific Catch Can Kits are designed for separating oil and preventing contamination of diesel engine induction systems.**

### **The range includes:**

- Vehicle specific kits
- Universal kits
- Replacement elements

### **Kits include:**

- ProVent® Catch Can
- Vehicle specific stainless steel bracket
- Pressure control valve
- Pressure relief / Bypass valve
- Hose and reducers
- Nuts, bolts and clamps
- Comprehensive installation instructions



**WARRANTY FILTRATION**  
**1 Year**

## VEHICLE SPECIFIC FILTER SERVICE KITS

**Drivetech 4x4 Filter Kits are made to high quality standards to meet the harsh demands of off road environments.**

Kits are available for most makes and models in Australia and New Zealand.

The filters contain a high quality filtration medium to ensure maximum engine efficiency and reliability.

Each kit contains all necessary service filters.



## UNIVERSAL 2 POINT DIFF BREATHER KIT

DT-2DBK

**This easy to install universal diff breather kit comes with everything you will need to protect your front and rear diff from water ingress.**

- Reduces the risk of damage to the front and rear diff on your 4x4 with a simple yet effective design
- Ensures easy fitment and maintenance
- Allows connection of a hose to a high point of the engine bay safely and securely to reduce the risk of damage to the tube from moving objects

**Kit includes:**

- 1 x 10m hose
- 4 x clamps
- 1 x mounting bracket
- 2 x barb fittings and filters
- 10 x cable ties



# FLARES

## NO DRILL FLARE KITS

***Have you fitted a bigger wheel and tyre combo and need to widen your vehicle to suit? We have the solution.***

- The flares widen the stance of your 4wd allowing you to use a variety of offset wheels and larger tyres
- Our flares allow the vehicle to be kept clean and free from damage as your wheels can sling mud and rocks along the body. The flares contain the rocks and mud keeping the vehicle free from dirt / mud and rock debris
- Available for a wide range of makes and models
- Available in two sizes 6inch, 9inch
- Available in either smooth or stud finish
- ABS thermo plastic
- Matt black finish
- UV stable
- Contains everything required to fit to all 4 wheel arches of a dual cab

### SMOOTH FINISH

A sleek smooth appearance that represents a factory style look, whilst allowing for a wider tyre and wheel combo.

Available for 4WD utes.



### STUD FINISH

A tough flare with a bolt-on look to increase the stance of your 4x4.

Available for 4WD utes:





# EXHAUST PERFORMANCE SYSTEMS

## 3" SYSTEM FOR GREATER AIRFLOW

**Whilst many turbo diesels have 2 1/4" systems, Drivetech 4x4 Performance Exhaust Systems are all 3" which means greater airflow. Greater airflow leads to more power.**

Other features of the Drivetech 4x4 Performance Exhaust Systems include:

- Ease of fitment across a range of vehicles
- 100% mandrel bent as opposed to press bent. This means the diameter of the tube is constant from the dump pipe to the tail pipe resulting in smoother, more efficient flow which keeps performance up.
- Aluminised steel to deal with everything from towing, offroad and highway driving.

Systems have been assembled using high quality components:

### Dump pipe

- TIG welded
- Mandrel bent quality dump pipes
- Laser cut
- Flange plates (10mm thick) 3" dump pipes

### Catalytic converters

- Efficient diesel catalytic converter
- Diesel cats have platinum coating so the correct emissions cleaning process can occur

### Flex Joint

- 2 ply internal braiding
- 304 grade stainless steel

### Muffler

- Glass packed
- Locked seam
- Double skin for toughness and durability
- Mandrel bent internals
- 6mm thickness tube for durability
- The muffler controls the exhaust gas expansion rate which controls back pressure against the turbine wheel so more power and less fuel used



**WARRANTY EXHAUST**  
**2 Years**

# MERCHANDISE

## GET DRESSED UP

### FLEECE HOODIE

- 50% polyester : 50% cotton
- Brushed inner jersey knit
- Low pill fleece
- Full front zip, hood and side pockets
- Available in small, medium, large, XL, 2XL, 3XL and 5XL



### JACKET

- Three layer softshell jacket
- Showerproof, wind resistant, breathable, tough wearing and insulative
- Available in small, medium, large, XL, 2XL, 3XL and 5XL



### T-SHIRT

- 100% cotton - 180GSM combed jersey knit
- Available in charcoal only
- Available in small, medium, large, XL, 2XL, 3XL



### CAP

DT-CAP

- Black cotton snapback cap



### STUBBY HOLDER

DT-STUBBY

- Drivtech 4x4 branded stubby holder



## QUOTATION

Make \_\_\_\_\_

Model \_\_\_\_\_

Year \_\_\_\_\_

<b>PART #</b>	<b>DESCRIPTION</b>	<b>QTY</b>	<b>PRICE</b>	<b>TOTAL (incl GST)</b>
<b>Total (incl GST)</b>				

**QUOTE PROVIDED BY**

---

---



**For further information please visit:**

**Australia - [www.drivetech4x4.com.au](http://www.drivetech4x4.com.au)**

**New Zealand - [www.drivetech4x4.co.nz](http://www.drivetech4x4.co.nz)**



Available from:



September 2020 - Edition 7

Our goods come with guarantees that cannot be excluded under the Australian Consumer Law. You are entitled to a replacement or refund for a major failure and for compensation for any other reasonably foreseeable loss or damage. You are also entitled to have goods repaired or replaced if the goods fail to be of acceptable quality and the failure does not amount to a major failure.

GPC Asia Pacific ABN 97 097 993 283

Phone: 1800 463 646